



**HOLDING STRONG SINCE 1941**

[WILTONTOLS.COM](http://WILTONTOLS.COM)

**FULL-LINE PRODUCT CATALOG**



World's first bullet-design Machinist Vise is manufactured. Wilton creates a name for themselves in the market place.



Wilton expands into clamping products With new and innovative ideas.

**1941**

**1950**

**1960**

**1970**



Wilton supports war efforts in WW2 to support our us troops overseas.



Wilton is the brand of choice in the Automotive boom of the 50's.

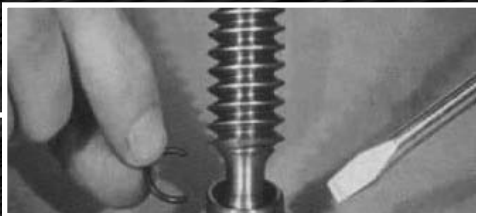


Pow-r-arms are introduced into the Wilton product line and allowed assembly-line workers hands-free production.



# HOLDING STRONG SINCE 1941

It was 70 years ago when Wilton® designed the first Bullet-Design machinist vise and created the groundwork of quality craftsmanship from which the Wilton brand would rise. As it was in 1941, so it remains now. The same high level of workmanship is in every tool that bares the name Wilton®. And the rest is truly history.....



The invention of the patented replaceable Perma-Pads allows users to replace the pad instead of the entire clamp.



The new Tradesman Vise sets the new standard of quality and durability in vises.

**1980**

**1990**

**2000**

**2012**



Wilton adds Columbian brand to expand current product offering.



BASH™ Unbreakable™ Sledge Hammers are introduced as the world's most durable sledge hammer.



# EVENTS AND SPONSORSHIPS



## SPONSORSHIPS

SkillsUSA is a partnership of students, teachers and industry professionals working together to ensure America has a skilled workforce. Wilton® shares the same passion. In 2011, Wilton began sponsoring SkillsUSA 's National Welding Competition by donating welding tools for use during the student competition as well as prizes. Look for Wilton's sponsorships and involvement in communities to raise a skilled American workforce.



## TRADESHOWS

Want to meet us in person? Visit us at one of our tradeshow as we showcase and demonstrate our new and innovative products. See below for a list of exhibitions from our past, present, and future:

- World of Concrete
- IMTS
- PRI
- FABTECH

**B.A.S.H.**<sup>TM</sup>  
**UNBREAKABLE**<sup>TM</sup>  
HANDLE TECHNOLOGY

**WIDESPREAD  
RECOGNITION**

Tested and approved by Popular Science in 2012, the newly launched Wilton BASH Unbreakable Sledge Hammers received widespread recognition from numerous major journals and publications.

TESTED & APPROVED  
**POPULAR SCIENCE**  
2012





# WILTON®: A CONSUMER FOCUSED BRAND



## MULTI CHANNEL TRAINING

At Wilton, we encourage a culture of innovation and learning. Wilton's dynamic training program includes interactive training modules and an online training website. Hands-on training sessions are led by teams of product specialists and industry professionals, ensuring our associates understand the value of our products and how they are used by our customers.

Wilton knows that investing in people helps us to thrive. From our U.S. based customer relations and technical services team to our experienced sales force in the field, we are confident we provide the highest level of post-sale support for our customers.



## CHALLENGER VAN TOUR

With our consumers in mind, we set out on a national tour to reach as many as possible. The Challenger Van Tour launched in 2011 and has made hundreds of stops throughout industrial America.

Aboard the Challenger Van you will find an assortment of our most popular Wilton products, new products, videos, demonstrations, as well as free giveaways.

**FOLLOW THE TOUR AND FIND UPCOMING APPEARANCES AT: [CHALLENGERVANTOUR.COM](http://CHALLENGERVANTOUR.COM)**



## AMERICAN MUSCLE CONTEST

In 2012 we launched the American Muscle Sweepstakes. Contestants had the opportunity to post a picture of their oldest Wilton vise and tell us its story for a chance to win \$5,000 in Wilton merchandise.

**THESE WILTON VISE STORIES ABOUT DURABILITY AND HERITAGE CAN BE VIEWED AT: [WILTONAMERICANMUSCLE.COM](http://WILTONAMERICANMUSCLE.COM)**



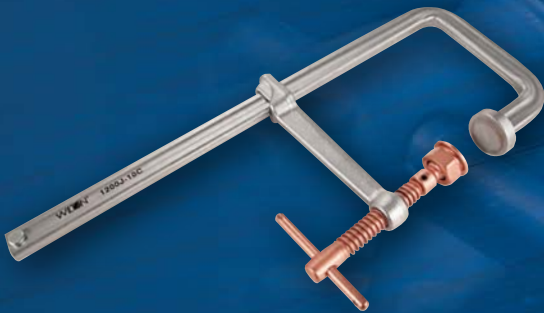
# NEW PRODUCTS



## MACHINE VISES

With an unmatched offering, look to Wilton® for a machine vise worthy of any drilling or milling application. This lineup is what you would expect from North America's leader in industrial bench vises.

**SEE PAGE 34-45**



## SPECIALTY L-CLAMPS

With our welders in mind, we sought to create new specialty L-Clamps ideal for unique welding applications. Now extending our line, these new additions offer Lever Style, J-Series, and Deep Reach options.

**SEE PAGE 49**



## B.A.S.H SLEDGE HAMMERS

The highly anticipated Wilton® BASH™ Sledge Hammers launched with enormous success in 2011. Based on customer feedback, new sizes are now available:

- :: 4 lb x 24"
- :: 8 lb x 16"
- :: 6 lb x 16"
- :: 10 lb x 16"

**SEE PAGE 72-73**



## B.A.S.H CROSS & BALL PEIN

On a never ending journey to create the highest quality, most indestructible tools on the market, Wilton is proud to offer the new BASH™ Cross Pein and Ball Pein hammers. Ideal for metalworking and automotive applications, these hammers boast the same Unbreakable™ features as the original BASH™ hammers.

**SEE PAGE 72-73**



# TABLE OF CONTENTS

## VISES

<b>USA Bullet Bench Vises.....</b>	<b>8-15</b>
<b>USA Columbian Bench Vises.....</b>	<b>16-19</b>
<b>Industrial Bench Vises.....</b>	<b>20-30</b>
<b>Vise Replacement Parts.....</b>	<b>31</b>
<b>POW-R-ARMS.....</b>	<b>32-33</b>
<b>Machine Vises.....</b>	<b>34-45</b>

## CLAMPS

<b>L-Clamps.....</b>	<b>46-53</b>
<b>C-Clamps.....</b>	<b>54-67</b>
<b>Specialty Clamps.....</b>	<b>68-69</b>

## HAND TOOLS

<b>NEW B.A.S.H Hammers.....</b>	<b>70-77</b>
<b>Pipe Wrenches.....</b>	<b>78</b>

## WARRANTY

<b>Wilton Lifetime Warranty.....</b>	<b>79</b>
--------------------------------------	-----------







**MADE IN  
USA**

# **BULLET VISES**

**MADE IN AMERICA. MADE TO LAST.**



**THE BULLET  
ADVANTAGE**



**WILTON COMBO  
PIPE AND BENCH**





**The Wilton® Bullet Vise family has improved over the years, but has always maintained the same high quality and integrity since 1941. This trademarked design has proven it's superiority for over 70 years. Bullet vises are proudly built in the USA.**



**WILTON  
MACHINIST**



**WILTON  
TRADESMAN**



# BULLET VISES

THE BULLET ADVANTAGE

**MADE IN  
USA**



## THE WILTON® BULLET DESIGN



**FULLY ENCLOSED DESIGN**

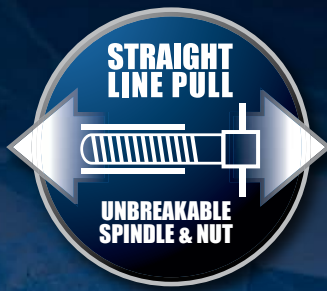


**60,000 PSI DUCTILE IRON BODY**



**PRECISION SLIDE BAR**





## DURABILITY

### **A FULLY ENCLOSED DESIGN:**

Extends the life of the vise by protecting all internal components and keeping out dust and debris. Lifetime lubricated and permanently sealed for trouble free service.

### **B 60,000 PSI DUCTILE IRON BODY:**

Virtually indestructible with 2X the strength of grey casted vises.

### **C PRECISION SLIDE BAR**

Keyed for a .003" fit, eliminating movement in the front jaw regardless of opened distance

## FUNCTIONALITY

### **D LONGER SPINDLE NUT:**

3X longer and 2X thicker, ensures a lifetime of smooth spindle movement and straight-line pull.

### **E LARGER ANVIL**

2X larger than the average anvil. Designed to take a beating while forming and shaping materials.

### **F 4 BOLT MOUNTING PATTERN:**

4 bolt pattern sturdier than industry-average 3 bolt pattern, maximizing stability during use.



**LONGER SPINDLE NUT**



**LARGER ANVIL**



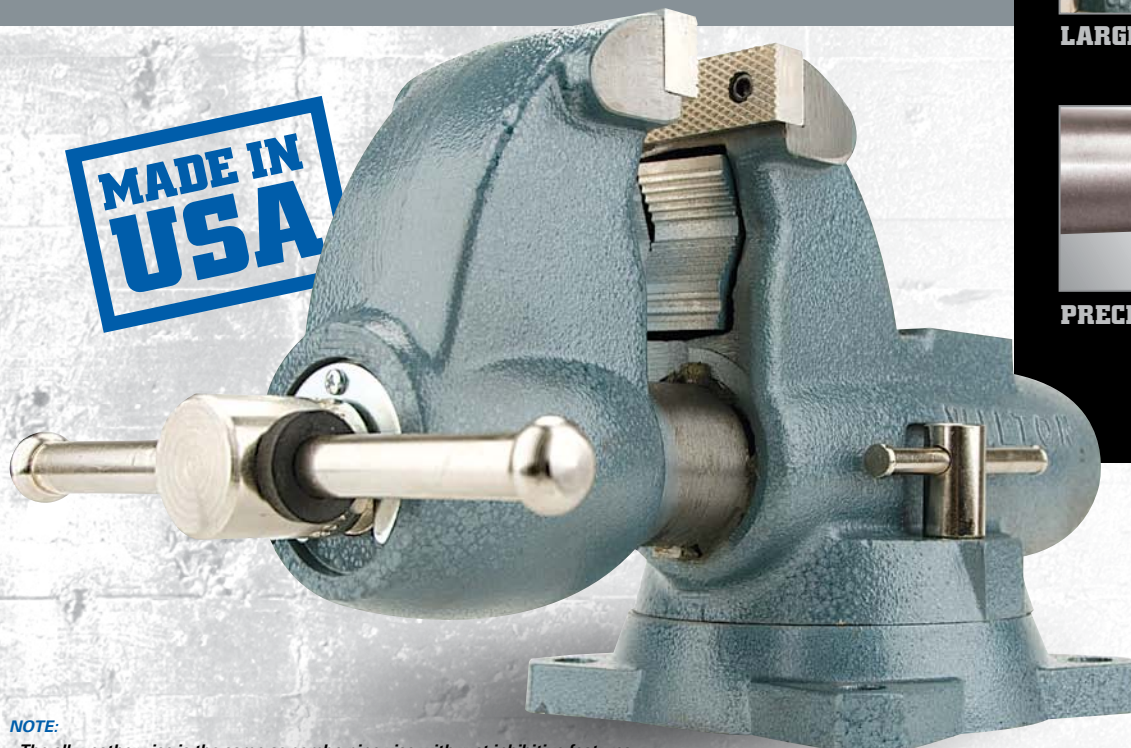
**4 BOLT MOUNTING PATTERN**



# WILTON® COMBO PIPE & BENCH

WILTON'S WORKHORSE

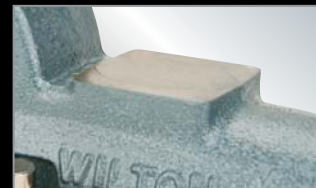
**MADE IN  
USA**



**NOTE:**  
 • The all weather vise is the same as combo pipe vise with rust inhibitive features.  
 • Meets federal spec # GGG-V-410a, Type IV.



SEALED CONSTRUCTION



LARGE ANVIL



PRECISION SLIDE BAR



## FEATURES

### SELF CENTERING PIPE JAWS:

- Hold Up to 6" Pipe Safely and Securely.
- Great For Irregularly Shaped Objects

### DEEP THROAT STYLE:

- Up to 50% Added Depth To Meet Tough Job Requirements Requiring Large Capacity

## IDEAL FOR

- Plant Maintenance
- Oil Field Service
- Heavy Construction
- Mechanical Trades
- Steel Fabrication

Stock No.	Model	Jaw Width (in.)	Maximum Opening (in.)	Throat Depth (in.)
<b>COMBO PIPE AND BENCH - SWIVEL BASE</b>				
10200	C-0	3-1/2	5	4-1/2
10225	C-1	4-1/2	6	4-3/4
10250	C-2	5	7	5-5/16
10275	C-3	6	9	6-5/8
<b>ALL WEATHER COMBO PIPE AND BENCH - SWIVEL BASE</b>				
10400	AW35	3-1/2	5	4-1/2
10500	AW45	4-1/2	6	4-3/4

Stock No.	Replacement Jaw Insert No.	Replacement Pipe Jaw Insert No.
10200	2904960	2908050
10225	2905000	2900770
10250	2903240	2900830
10275	2907370	2907600
10400	2905040	2901100
10500	2907430	2907420



# WILTON® MACHINIST

## WILTON'S ORIGINAL VISE



**NOTE:**

- Swivel Base Meets federal spec # GGG-V-410a, Type VI, Class 2
- Stationary Base Meets federal spec # GGG-V-410a, Type VI, Class 1

### FEATURES

**STATIONARY / 360° SWIVEL BASE:**

- All Sizes Available in Both Stationary and Swivel Base

**MAX JAW CAPACITY:**

- Up to 12" Jaw Opening for Jobs
- Demanding Maximum Holding Capacity

**LARGE ANVIL:**

- Designed To Take A Pounding While Forming and Shaping Materials

### IDEAL FOR

- Machine Shops
- Automotive Maintenance
- Maintenance and Repair
- Metal Fabrication



**SEALED CONSTRUCTION**



**LARGEST WORKING CAPACITY**



**PRECISION SLIDE BAR**



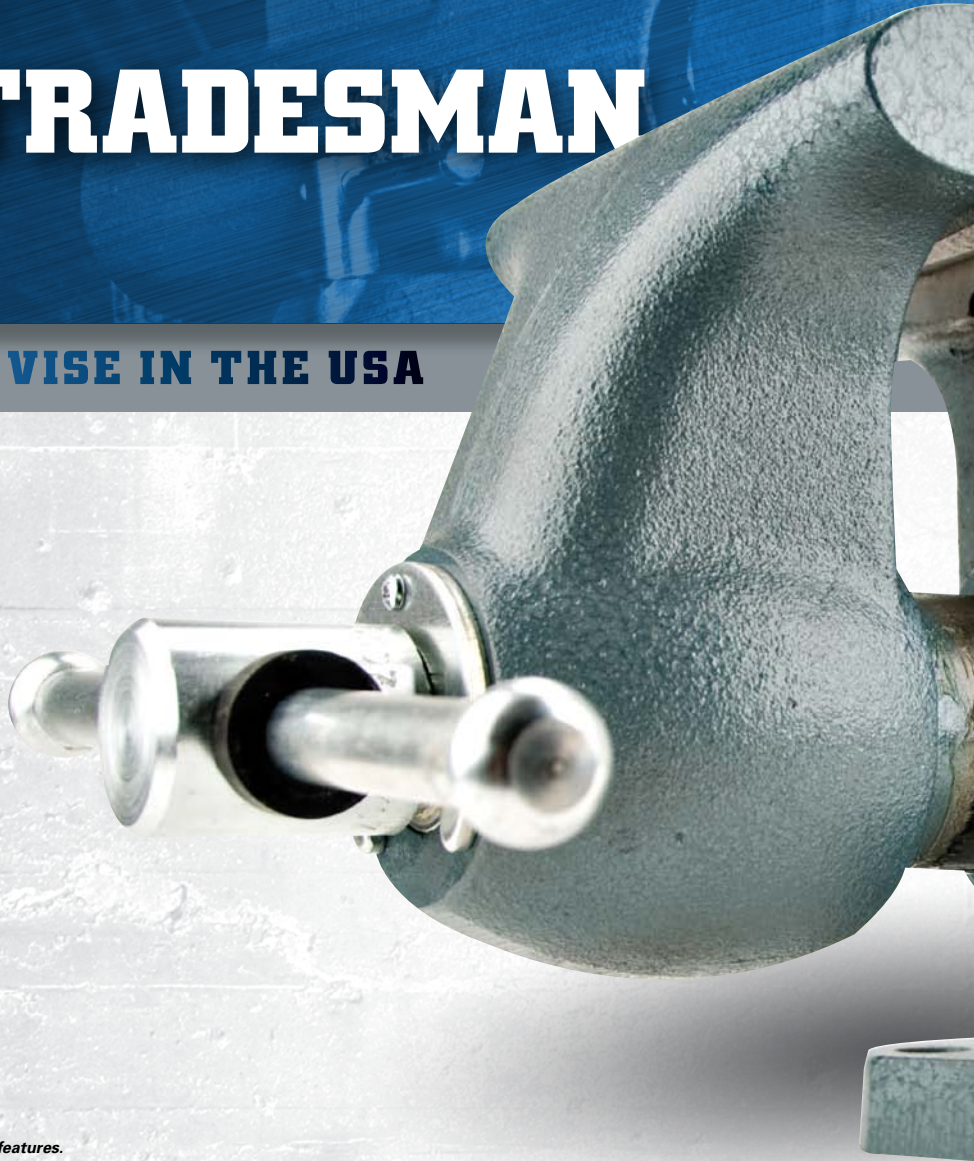
Stock No.	Model	Jaw Width (In.)	Jaw Opening (In.)	Throat Depth (In.)	Replacement Jaw Insert No.
<b>MACHINIST - SWIVEL BASE</b>					
10006	300S	3	4-3/4	2-5/8	2903080
10011	350S	3-1/2	5-1/4	2-3/4	2904960
10016	400S	4	6-1/2	3-1/2	2904980
10021	450S	4-1/2	7-1/2	4	2905000
10026	500S	5	8	4-1/4	2905020
10031	600S	6	10	5-1/2	2903280
10036	800S	8	12	5-13/16	2904940
<b>MACHINIST - STATIONARY BASE</b>					
10056	300N	3	4-3/4	2-5/8	2903080
10066	350N	3-1/2	5-1/4	2-3/4	2904960
10076	400N	4	6-1/2	3-1/2	2904980
10086	450N	4-1/2	7-1/2	4	2905000
10096	500N	5	8	4-1/4	2905020
10107	600N	6	10	5-1/2	2903280
10116	800N	8	12	5-13/16	2904940



# WILTON® TRADESMAN

#1 INDUSTRIAL BENCH VISE IN THE USA

**MADE IN  
USA**



**NOTE:**

- The all weather vise is the same as combo pipe vise with rust inhibitive features.
- Meets federal spec # GGG-V-410a, Type IV.

## FEATURES

**STEEL PIPE JAWS:**

- Fixed Jaws Hold Up to 3-1/2" Pipe Safely and Securely.
- Great For Irregularly Shaped Objects

**MAX JAW CAPACITY:**

- Up to 7" Jaw Opening For Jobs Demanding Maximum Holding Capacity

**REVERSIBLE JAW INSERTS:**

- Standard serrated jaws for extra grip or smooth to prevent marring on softer surfaces

## IDEAL FOR

- Tradesmen
- Automotive
- Construction Sites
- Metal Fabrication
- Service and MRO
- Utility

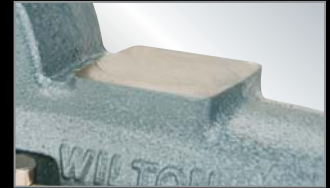
Stock No.	Model	Jaw Width (In.)	Jaw Opening (In.)	Throat Depth (In.)	Pipe Jaw Capacity (In.)
<b>TRADESMAN - SWIVEL BASE</b>					
63199	1745	4-1/2	4	3-1/4	1/4 – 2-1/2
63200	1755	5-1/2	5	3-3/4	1/4 – 3
63201	1765	6-1/2	6-1/2	4	1/4 – 3-1/2
63202	1780A	8	7	4-3/4	1/8 – 3-1/2

Stock No.	Replacement Jaw Insert No.	Replacement Pipe Jaw Insert No.
63199	2908060	2904200
63200	2908070	2904200
63201	2908080	2904200
63202	2908100	2908050





**SEALED CONSTRUCTION**



**LARGE ANVIL**



**PRECISION SLIDE BAR**



## PEDESTAL BASE

### BASE:

- 18" x 18" x 1/4", Top: 10-1/2" x 8-1/2" x 1/4"
- Great For Irregularly Shaped Objects

### PERFECT FOR:

- 1755 and 1765 Tradesman Swivel base models

Stock No.	Model	Description	Ship Wt. (Lbs.)
<b>TRADESMAN PEDESTAL BASE</b>			
63185	159V	Steel Pedestal Base Fits Models 1755 and 1765 (33-1/2" Tall Base)	55

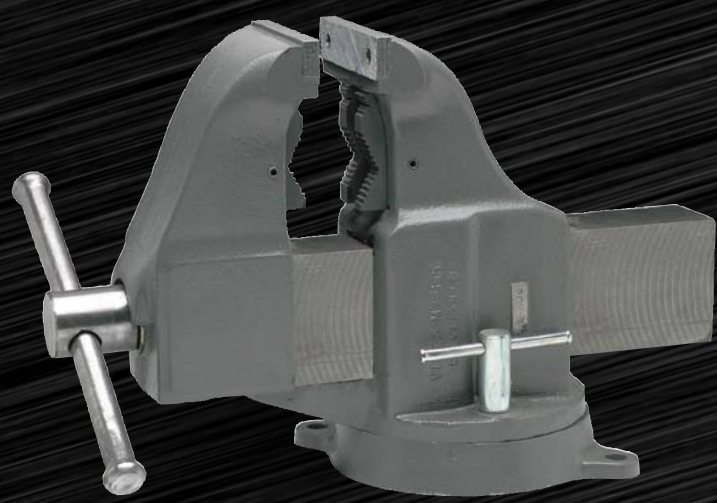






# COLUMBIAN VISES

**TIMELESS TRADITION OF RUGGEDNESS AND WORKMANSHIP**



**COLUMBIAN<sup>®</sup>  
COMBO PIPE  
AND BENCH**





**Wilton expanded its vise family in the mid 1990's through the merger with another quality USA vise manufacturer: The Warren Tool Company in Cleveland Ohio. Nothing has changed since Columbian vises began in 1929 until today. The merger of Columbian with Wilton allows for the most complete offering of high-quality and reliable industrial vises in the marketplace.**



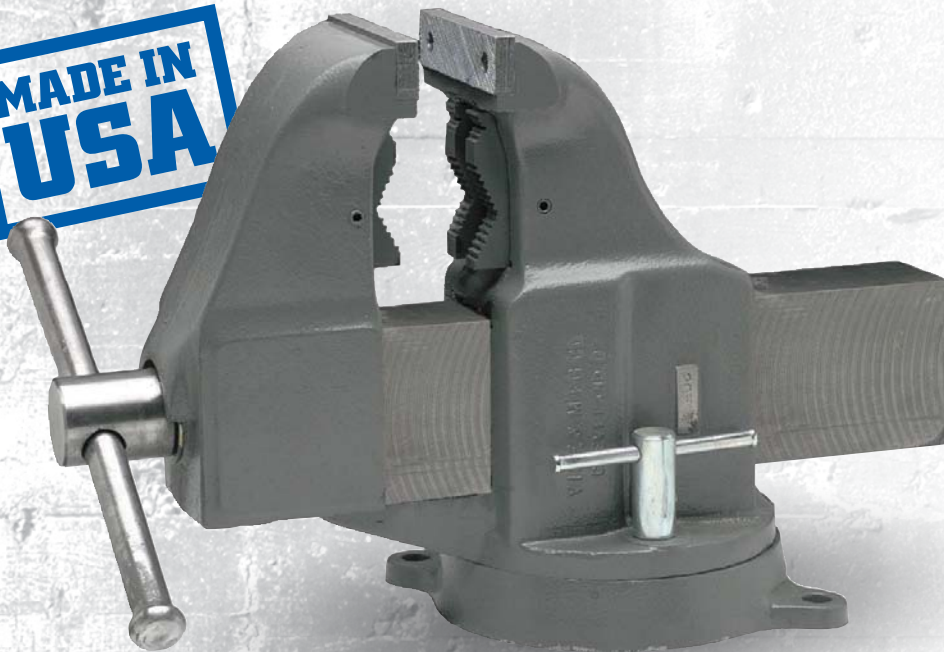
**COLUMBIAN<sup>®</sup>  
MACHINIST**



# WILTON'S COLUMBIAN® COMBO PIPE & BENCH

VIRTUALLY INDESTRUCTIBLE

**MADE IN  
USA**



**NOTE:**  
• Meets federal spec # GGG-V-410a, Type IV.



**DUCTILE IRON BODY**



**HARDENED STEEL JAWS  
AND PIPE JAWS**



**INDUSTRIAL 360°  
LOCKING SWIVEL BASE**



## FEATURES

### 60,000 PSI DUCTILE IRON BODY:

- 2X Strength of Grey Casted Vises Virtually Indestructible Under Heavy Industrial Usage

### POSITIVE ALIGNMENT:

- Precision Machined Nut and Back Jaw Align For a Strong, Even Hold

### PRECISION SLIDE HANDLE:

- Handle Balls Forged From Handle Stock and Can't Come Loose

## IDEAL FOR

- Plant Maintenance
- Heavy Construction
- Steel Fabrication
- Tradesmen
- Mechanical Trades
- Automotive

Stock No.	Model	Jaw Width (in.)	Maximum Opening (in.)	Throat Depth (in.)	Pipe Jaw Capacity (in.)
<b>COLUMBIAN®COMBO PIPE AND BENCH</b>					
10403	203-1/2-M3	3-1/2	4	4	1/8 – 2-1/2
10404	204-1/2-M3	4-1/2	5	5-3/8	1/8 – 3-1/2
10405	205M3	5-1/8	6	6-1/4	1/8 – 4-1/2
10406	206M3	6	10	7-1/8	1/8 – 6

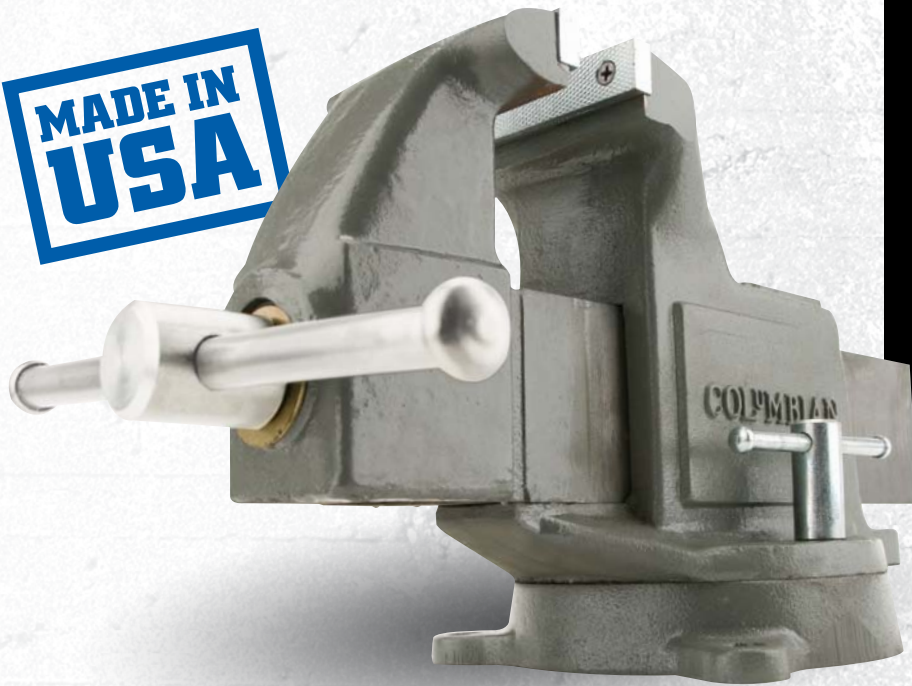
Stock No.	Replacement Jaw Insert No.	Replacement Pipe Jaw Insert No.
10403	10102S40	10403S46
10404	10104S40	10404S46
10405	10405S40	10405S46
10406	10106S40	10405S46



# WILTON'S COLUMBIAN<sup>®</sup> MACHINIST

**BUILT TO PERFORM**

**MADE IN  
USA**



**NOTE:**

• Meets federal spec # GGG-V-410a, Type VI, Class 2



**HARDENED STEEL JAWS**



**LARGE POLISHED ANVIL**



**INDUSTRIAL 360°  
LOCKING SWIVEL BASE**



## FEATURES

**60,000 PSI DUCTILE IRON BODY:**

- 2X Strength of Grey Casted Vises Virtually Indestructible Under Heavy Industrial Usage

**POSITIVE ALIGNMENT:**

- Precision Machined Nut and Back Jaw Align For a Strong, Even Hold

**PRECISION SLIDE HANDLE:**

- Handle Balls Forged From Handle Stock and Can't Come Loose

## IDEAL FOR

- Machine Shops
- Automotive Maintenance
- Service and MRO

Stock No.	Model	Jaw Width (In.)	Jaw Opening (In.)	Throat Depth (In.)	Replacement Jaw Insert No.
<b>COLUMBIAN<sup>®</sup> MACHINIST</b>					
10201	603M3	3	4	3	10101S40
10202	603-1/2-M3	3-1/2	5	3-1/4	10102S40
10203	604M3	4	6	3-5/8	10103S40
10204	604-1/2-M3	4-1/2	7	4-1/8	10104S40
10205	605M3	5	8	4-1/4	10105S40
10206	606M3	6	10	4-3/8	10106S40





# INDUSTRIAL BENCH VISES

VERSATILE AND DEPENDABLE



**MECHANICS**



**UTILITY**



**REVERSIBLE**



**SHOP**





**Wilton's expansive Industrial Bench Vise line ensures we have you covered in any industrial setting.**



**MULTI-PURPOSE**



**SPECIALTY**



**SUPER JUNIORS**



**JAW CAPS**



# WILTON® MECHANICS

**BUILT FOR SERIOUS MECHANICS**



**HARDENED STEEL JAWS  
PIPE JAWS**



**SEALED CONSTRUCTION**



**4 MOUNTING POSTS**



## FEATURES

### 30,000 PSI DUCTILE IRON BODY:

- Heavy-Duty Castings Are Built For Rugged Use and Extended Life

### LIFETIME LUBRICATION:

- Grease is Permanently Sealed In For Trouble-Free Service

### HI-VISIBILITY YELLOW:

- Conforms to OSHA standards for Physical Hazards Regulation #1910.144

## IDEAL FOR

- Professional Mechanics
- Automotive Maintenance
- Maintenance and Repair

Stock No.	Model	Jaw Width (in.)	Maximum Opening (in.)	Throat Depth (in.)	Pipe Jaw Capacity (in.)
<b>740 SERIES MECHANICS VISES</b>					
21300	744	4	4-1/2	3-7/16	1/4 – 2
21400	745	5	5-1/4	3-3/4	1/4 – 2-1/2
21500	746	6	5-3/4	4-1/8	1/4 – 3-1/2
21800	748A	8	8-1/4	4-3/4	1/4 – 3-1/2
<b>HIGH-VISIBILITY SAFETY VISES</b>					
63187	1550	5	5-1/4	3-3/4	1/4 – 2-1/2
63188	1560	6	5-3/4	4-1/8	1/4 – 3-1/2

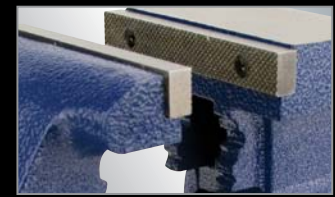
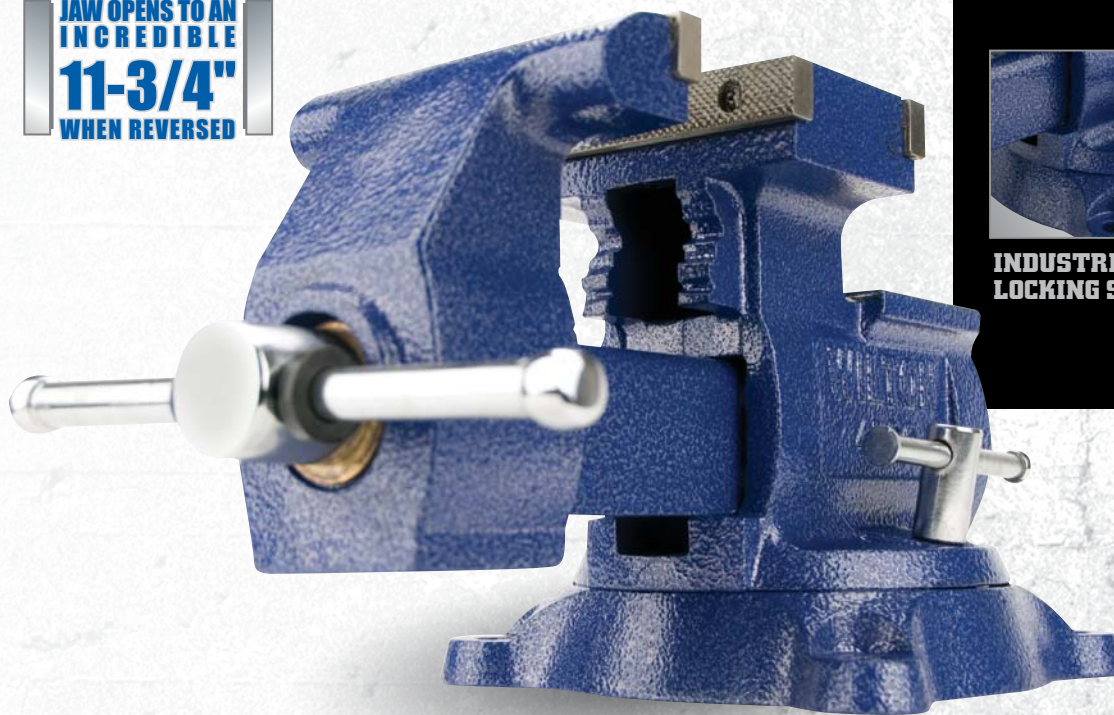
Stock No.	Replacement Jaw Insert No.	Replacement Pipe Jaw Insert No.
21300	21300-03	21300-03
21400	2904110	2904110
21500	21500-03	21500-03
21800	21800-03	21800-03
63187	21400-03	21400-03
63188	21500-03	21500-03



# WILTON® REVERSIBLE MECHANICS

VERSATILITY. REVERSABILITY

JAW OPENS TO AN  
INCREDIBLE  
**11-3/4"**  
WHEN REVERSED



HARDENED STEEL JAWS



PRECISION SLIDE HANDLE



INDUSTRIAL 360°  
LOCKING SWIVEL BASE



## FEATURES

### 30,000 PSI DUCTILE IRON BODY:

- Heavy-Duty Castings Are Built For Rugged Use and Extended Life

### PIPE JAWS:

- Built-In Steel Jaws Handle Pipe From 1/8" – 3"

### DUAL ANVILS:

- Two Working Anvil Surfaces For Forming and Shaping Materials

## IDEAL FOR

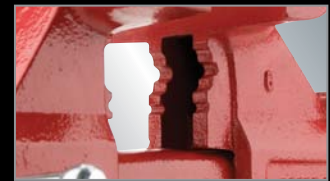
- Professional Mechanics
- Automotive Maintenance
- Maintenance and Repair

Stock No.	Model	Jaw Width (in.)	Maximum Opening Reversed (in.)	Throat Depth Reversed (in.)	Pipe Jaw Capacity (in.)	Replacement Jaw Insert No.
<b>MULTI-PURPOSE MECHANIC VISE</b>						
14500	4500	5-1/2	6 / 9-3/4	3-3/4 / 2-3/4	1/4 – 2	14500S41
14600	4600	6-1/2	8 / 9-3/4	4 / 3	1/8 – 3-1/2	14600S03
14800	4800	8	9-1/2 / 11-3/4	5 / 2-3/4	1/8 – 4-1/2	14800S03



# WILTON® UTILITY

IDEAL FOR ANY JOB



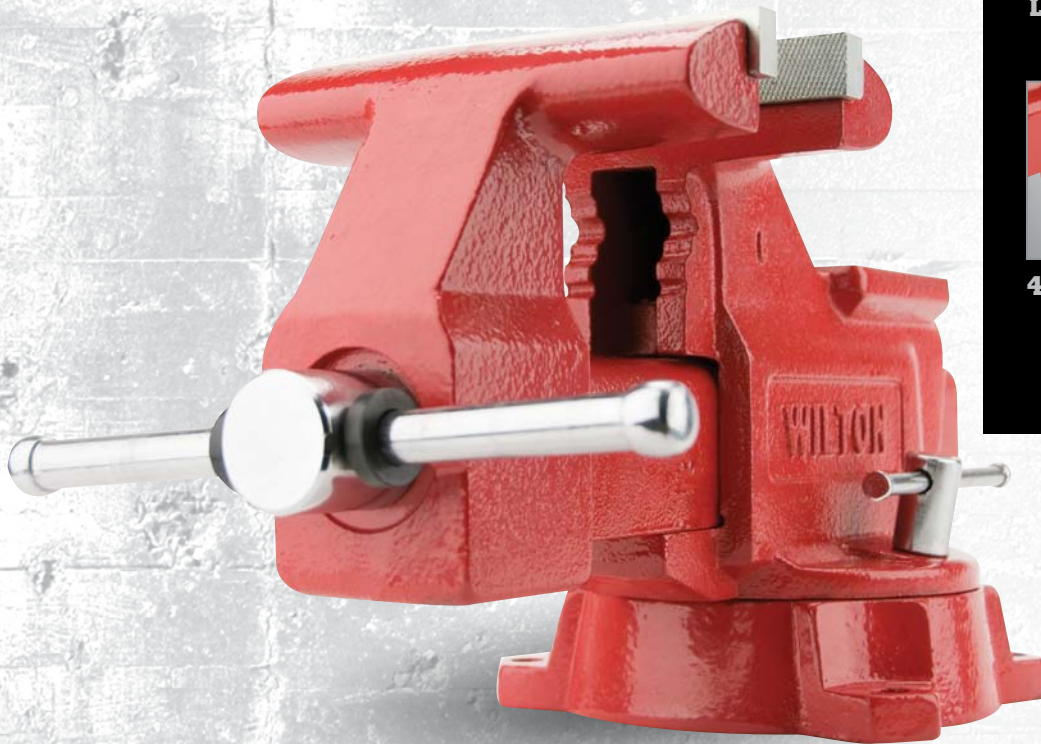
PIPE JAWS



LARGE ANVIL



4 MOUNTING POSTS



## FEATURES

### REPLACEABLE STEEL JAWS:

- Furnished With a Serrated Pattern to Insure Strength and Long Life

### LARGE ANVIL:

- Designed To Take A Pounding While Forming and Shaping Materials

### 180° LOCKING SWIVEL BASE:

- Single Lockdown Provides Quick and Easy Positioning

## IDEAL FOR

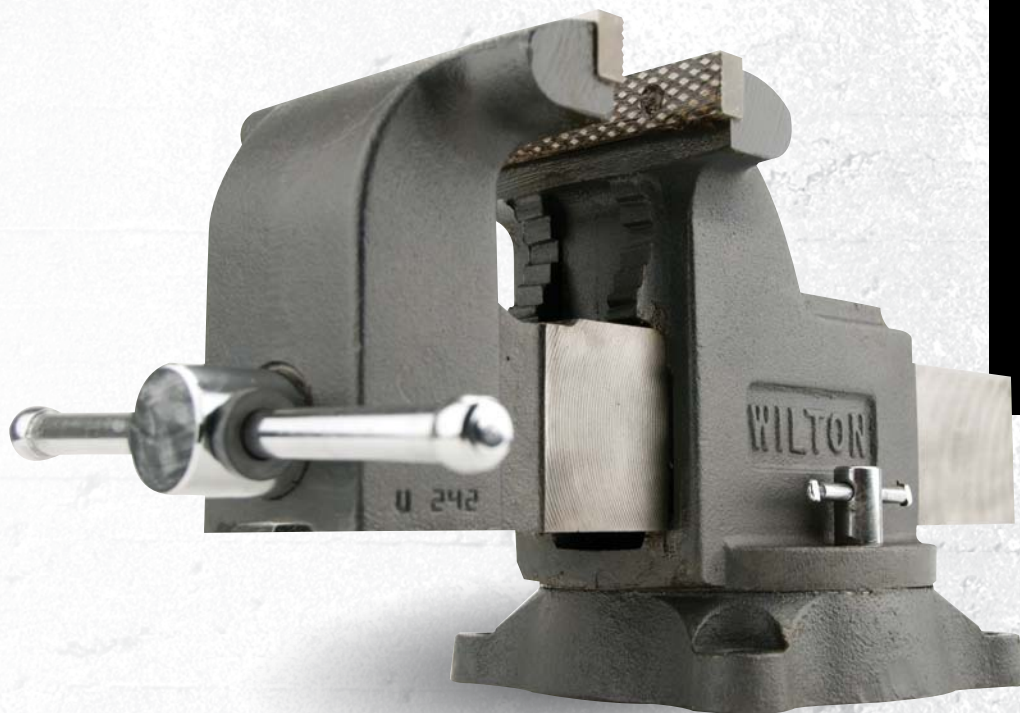
- General Purpose
- Light Tradesman
- Utility and Service
- Automotive

Stock No.	Model	Jaw Width (in.)	Maximum Opening (in.)	Throat Depth (in.)	Pipe Jaw Capacity (in.)	Replacement Jaw Insert No.
<b>UTILITY VISES - SWIVEL BASE</b>						
11126	674	4-1/2	4	2-5/8	1/8 – 2	76654S41
11127	675	5-1/2	5	3-1/4	1/8 – 2-1/2	11127S41
11128	676	6-1/2	5-1/2	3-13/16	1/8 – 2-1/2	11128S41
191	656HD	6-1/4	6	4-3/8	1/8 – 3	11106S41
11800	648HD	8	7-1/2	4-1/2	1/8 – 3	2904130



# WILTON® SHOP

**BUILT FOR YOUR WORKBENCH**



**PIPE JAWS**



**POLISHED ANVIL**



**4 MOUNTING POSTS**



## FEATURES

### HARDENED STEEL JAWS:

- Furnished with a Serrated Pattern to Insure Strength and Long Life

### DOUBLE LOCK DOWNS:

- 2 Lockdowns for A Sturdier Base and Less Rotation

### 360° LOCKING SWIVEL BASE:

- 360° Swivel Ability for Ideal Positioning On Workbench

Stock No.	Model	Jaw Width (in.)	Maximum Opening (in.)	Throat Depth (in.)	Pipe Jaw Capacity (in.)	Replacement Jaw Insert No.
<b>SHOP VISES</b>						
63300	WS4	4	4	2-3/4	22	310041W
63301	WS5	5	5	3	31	310051W
63302	WS6	6	6	3-1/2	42	310061W
63304	WS8	8	8	4	67	310081W

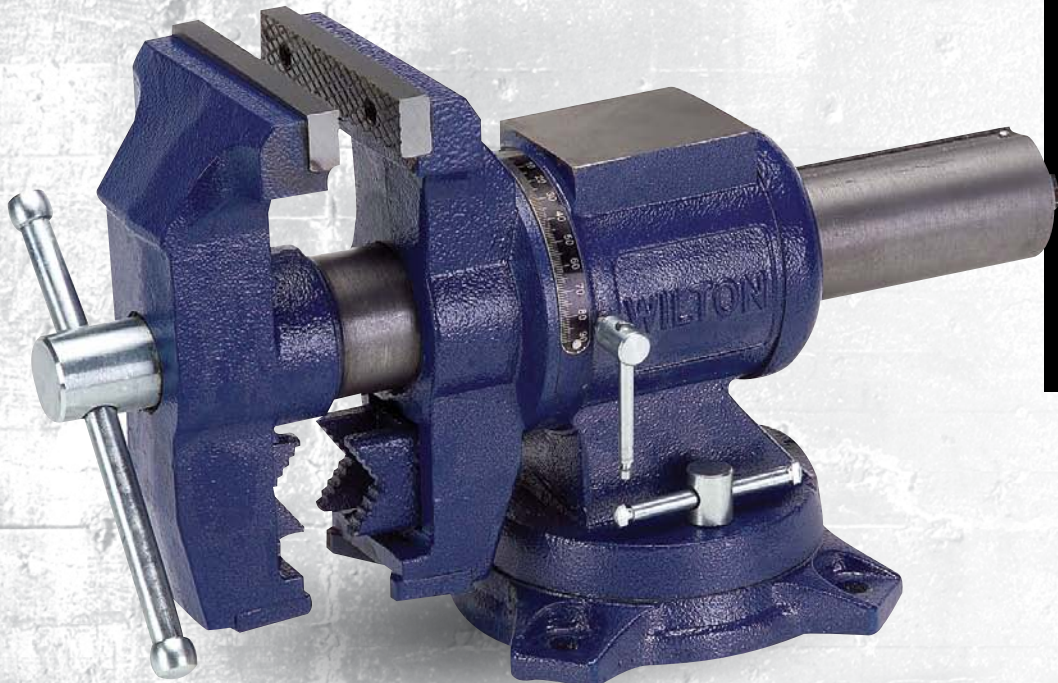
## IDEAL FOR

- General Purpose
- Light Tradesman
- Utility and Service
- Automotive

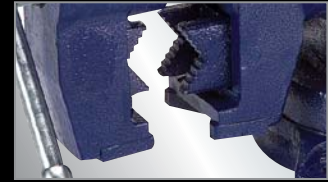


# WILTON® MULTI-PURPOSE

## 360° JAW ROTATION



360° JAW ROTATION



PERMANENT PIPE JAWS



LARGE ANVIL



## FEATURES

### ROTATING HEAD:

- Great for clamping material at any angle

### V-JAW:

- Holds 1" - 3" diameter round stock vertically

### INDEXING:

- 90° left and right for quick setup

### LARGE ANVIL:

- Built-in anvil for flat shaping

## IDEAL FOR

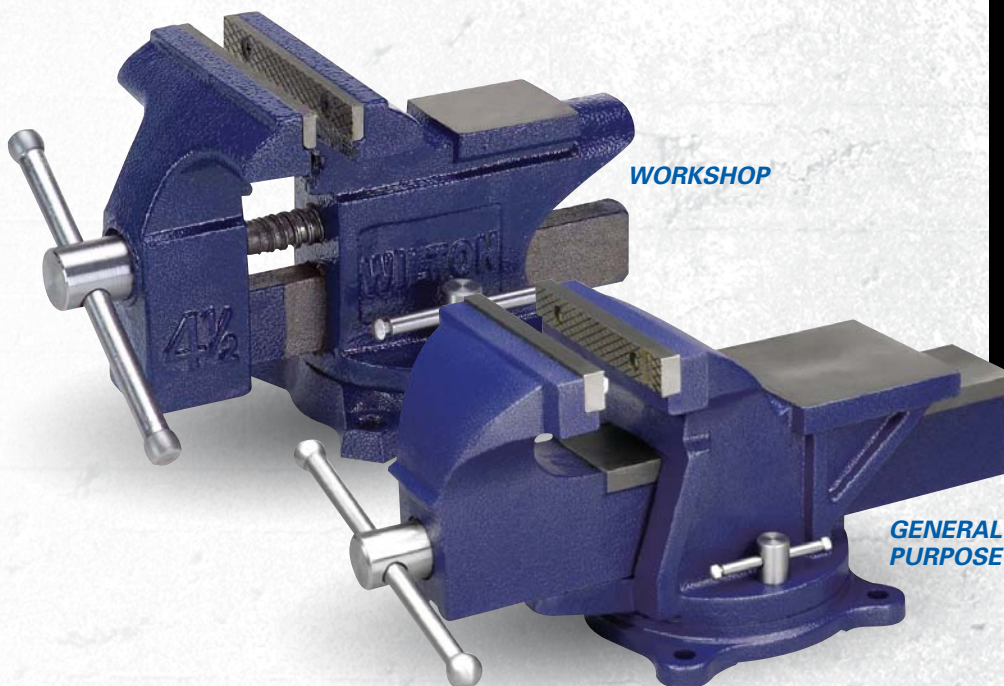
- General Purpose
- Light Tradesman
- Utility and MRO

Stock No.	Model	Jaw Width (in.)	Maximum Opening (in.)	Throat Depth (in.)	Pipe Jaw Capacity (in.)	Replacement Jaw Insert No.
<b>UTILITY VISES - SWIVEL BASE</b>						
69999	-	5	5-1/4	3	3/8-3	69999S41

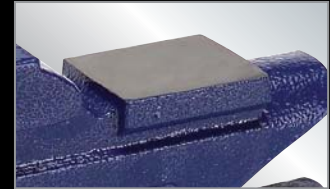


# WILTON® WORKSHOP & GENERAL PURPOSE

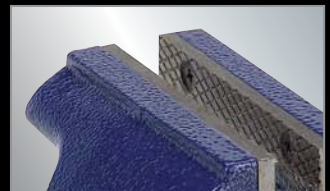
## WEEKEND WARRIORS



**HIGH STRENGTH STEEL  
CONSTRUCTION**



**BUILT-IN ANVIL**



**DIAMOND SERRATED  
JAW FACES**



### FEATURES- Workshop

**JAW FACES:**

- Diamond serrated for positive gripping

**PIPE JAWS:**

- Permanent pipe jaws

**SWIVEL BASE:**

- 270° swivel base with single lock down

### FEATURES - Gen. Purpose

**VICE BODY:**

- Made from high strength steel

**BASE:**

- Swivel base with double lock down

**ANVIL:**

- Built-in anvil for flat shaping

### IDEAL FOR

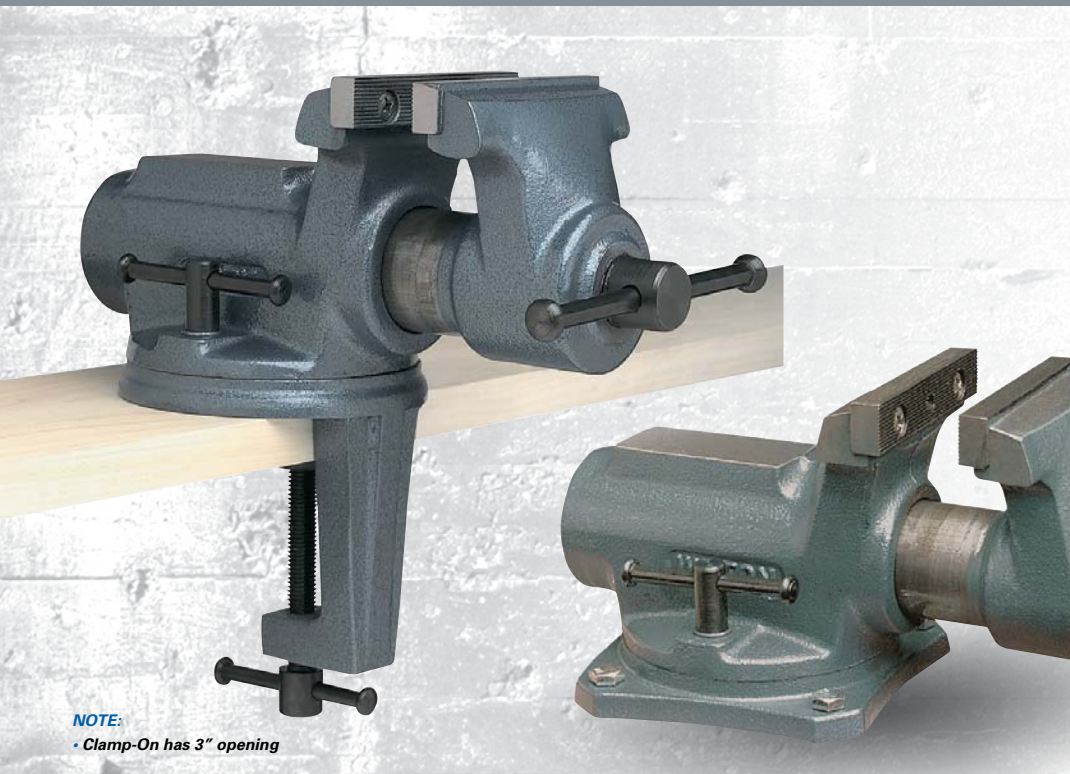
- Light Duty Use
- General Purpose
- Home Shop
- Weekend Projects

Stock No.	Model	Jaw Width (in.)	Maximum Opening (in.)	Throat Depth (in.)	Pipe Jaw Capacity (in.)
<b>WORKSHOP</b>					
50503	-	3-1/2	3-3/4	2	1-1/4
50504	-	4-1/2	4	2-3/8	1-1/2
<b>GENERAL PURPOSE</b>					
11104	-	4	4	2-1/4	-
11105	-	5	5	2-1/2	-
11106	-	6	6	3	-



# WILTON® SUPER JUNIORS

## THE MINI BULLET



**NOTE:**  
• Clamp-On has 3" opening



**BROAD ANVIL**



**LIGHTWEIGHT AND PORTABLE**



**FULLY ENCLOSED DESIGN**



## FEATURES

### STEEL TOP JAWS:

- Replaceable and Grooved for Strong Holding Action

### 45° LOCKING SWIVEL BASE:

- Double Lockdowns for Quick and Easy Positioning In Any Working Position

## IDEAL FOR

- General Purpose
- Light Tradesman
- Home Shop

Stock No.	Model	Jaw Width (In.)	Jaw Opening (In.)	Throat Depth (In.)	Replacement Jaw Insert No.
<b>WILTON® SUPER-JUNIOR® - CLAMP-ON BASE</b>					
63198	CBV-65	2-1/2	2-1/8	1-3/4	2900270
63247	CBV-100	4	2-1/4	2	2900300
<b>WILTON® SUPER-JUNIOR® - SWIVEL BASE</b>					
63244	SBV-65	2-1/2	2-1/8	1-3/4	2900270
63248	SBV-100	4	2-1/4	2	2900300



# WILTON® CLAMP-ON & VACUUM

FOR SMALLER PROJECTS



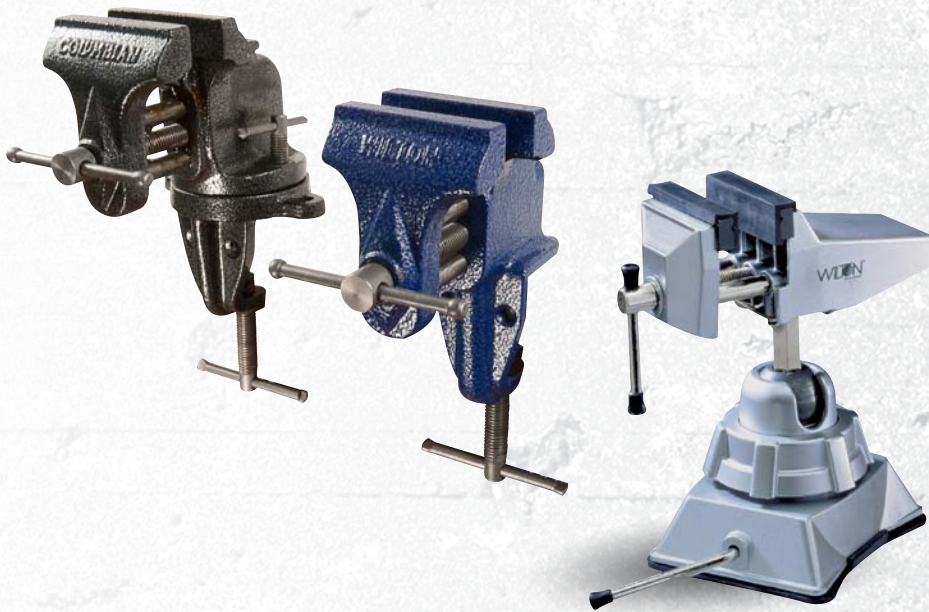
**DOUBLE STEEL  
GUIDE BARS**



**CAST JAWS**



**VACUUM BASE**



**NOTE:**

• Clamp-On Meets federal spec #GGG-V-410a

## FEATURES - Clamp-On

**DOUBLE STEEL GUIDE BARS:**

- Insures Parallel Alignment of Pipe Jaws for Consistent Holding Pressure

**CAST JAWS:**

- Holds Workpiece Firmly

**PORTABLE:**

- Vise Can Quickly and Easily Be Transferred to New Work Station

## IDEAL FOR

- General Purpose
- Light Tradesman
- Woodworking

## FEATURES- Vacuum

**360° SWIVEL BASE AND 180° HEAD TILT:**

- Can be used in a wide variety of working positions

**SEAL VACUUM BASE:**

- Secure base to any flat, clean and dry surface by pressing base to surface and pulling lock arm

**CAST ALUMINUM BODY:**

- Strong and durable

Stock No.	Model	Jaw Width (in.)	Maximum Opening (in.)
<b>WILTON® CLAMP-ON VISE</b>			
33150	150	3	2-1/2
33153	153	3	2-1/2
<b>WILTON® VACUUM VISE</b>			
63500	3VB	2-3/4	2-1/2



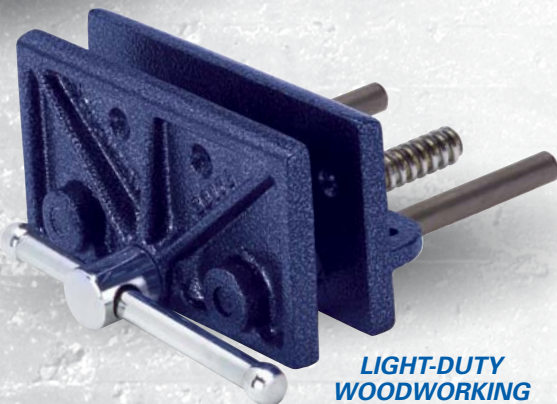
# WILTON® WOODWORKING

WOODWORKING MADE TOUGH



WOODWORKING

Replaceable Magnetic  
Maple Jaw Inserts



LIGHT-DUTY  
WOODWORKING



SELF CENTERING JAW



REPLACEABLE MAPLE  
JAW INSERTS



STURDY STEEL HANDLE

## WOODWORKING FEATURES

### SELF CENTERING JAW:

- Ensure a strong hold on all workpieces no matter what the shape

### FRONT JAW:

- Pivots 10° to allow for irregular shaped parts

### PIVOT JAW:

- Can be removed for wider clamping requirements

## IDEAL FOR

- Woodworking
- Light Tradesman

## LIGHT-DUTY FEATURES

### HIGH-TENSILE IRON JAWS:

- Provide strength and durability

### LIGHTWEIGHT DESIGN:

- Perfect for home craftsmen

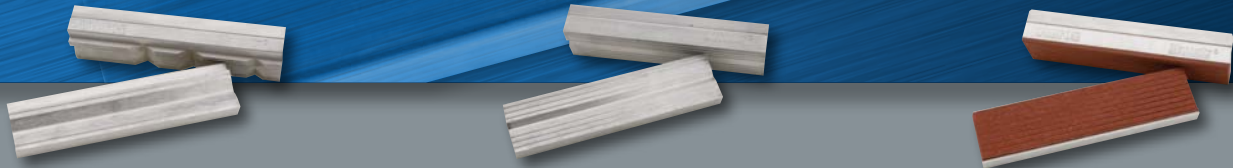
### COLD ROLLED STEEL GUIDE BARS:

- Offer strength and integrity to the tool

Stock No.	Model	Jaw Width (In.)	Jaw Opening (In.)	Type of Nut	Replacement Jaw Insert No.
<b>WOODWORKING VISES</b>					
63144	78A	4 x 7	10	Rapid	63142
63245	78C	4 x 7	10	Continuous	63142
63218	79A	4 x 10	13	Rapid	63143
63246	79C	4 x 10	13	Continuous	63143
<b>LIGHT-DUTY WOODWORKING VISE</b>					
33176	176	6-1/2	4-1/2	-	-



# BENCH VISE ACCESSORIES



## MODEL P-PRISM MAGNEFIX JAW CAPS

- Jaw construction includes a 120° horizontal V-groove, three vertical V-grooves and a 90° groove for marking out and center punching
- Ideal for light tapping and thread cutting



## MODEL A-ALUMINUM MAGNEFIX JAW CAPS

- Aluminum alloy design includes six grooves to compensate for the unevenness of the workpiece
- Deeper V-groove ensures more secure clamping of circular workpieces
- Use together with rubber magnefix jaw caps



## MODEL F-FIBER FACE MAGNEFIX JAW CAPS

- Aluminum alloy with laminated fiber cover to prevent the absorption of outside materials
- Heat parts rapidly by concentrating heat into part
- Use on workpieces to avoid distortion and clamping marks



## MODEL R-RUBBER FACE MAGNEFIX JAW CAPS

- Aluminum alloy with synthetic rubber cover
- Jaw cap conforms to workpiece and grips firmly without slipping while protecting work surface
- Use in combination with aluminum and prism jaw caps to clamp taper pins or tapered workpieces

## COPPER JAW CAPS

- Designed to avoid marring the surface of materials
- 100% copper jaw caps have polished faces and pliable copper extensions for a sure-grip fit

## MULTI-GRIP VISE JAWS

- Soft polyurethane jaws designed to avoid marring the surface of softer metals and to protect jaw face
- Designed to fit any 3" – 6" vise jaws, including all WILTON® and Columbian® vises
- Magnetic back mounts securely to jaw
- Great for holding wood, metal and tubing
- One size fits all

Stock No.	Model	Jaw Width (In.)
<b>MODEL P-PRISM</b>		
14844	P-3	3
14846	P-4	4
14847	P-4.5	4-1/2
14848	P-5	5
14873	P-5.5	5-1/2
14849	P-6	6
14876	P-6.5	6-1/2
<b>MODEL R-RUBBER FACE</b>		
14838	R-3	3
14840	R-4	4
14841	R-4.5	4-1/2
14842	R-5	5
14872	R-5.5	5-1/2
14843	R-6	6
14875	R-6.5	6-1/2

Stock No.	Model	Jaw Width (In.)
<b>MODEL A-ALUMINUM</b>		
14826	A-3	3
14828	A-4	4
14829	A-4.5	4-1/2
14830	A-5	5
14871	A-5.5	5-1/2
14831	A-6	6
14874	A-6.5	6-1/2
<b>COPPER JAW CAPS</b>		
24403	404-3	3
24404	404-3-1/2	3-1/2
24405	404-4	4
24406	404-4-1/2	4-1/2
24407	404-5	5
63203	404-5-1/2	5-1/2
24408	404-6	6
63204	404-6-1/2	6-1/2
24409	404-8	8

Stock No.	Model	Jaw Width (In.)
<b>MODEL F-FIBER FACE</b>		
14834	F-4	4
14835	F-4.5	4-1/2
14836	F-5	5
14837	F-6	6
<b>MULTI-GRIP VISE JAWS</b>		
21111	21111	5-1/2





# WILTON® POW-R-ARMS

## WORKHOLDING SUPPORT FOR PRODUCTION LINES



### POW-R-ARM™ MECHANICAL NO. 301

- Extra-strong, positioner with exceptionally fast on-off action, the 301 is designed for high production assembly line applications.
- Body is machined cast iron with all steel parts
- Two mounting holes at top (5/16-18) are 1" apart



### POW-R-ARM™ HYDRAULIC NO. 303

- Same size and strength as Model 301 with hydraulic locking action
- Rated for heavy-duty assembly, welding, maintenance and tool room work
- Hydraulic system is hand operated, self-contained and sealed with replaceable cups
- Two mounting holes at top (5/16-18) holes 1" apart



### POW-R-ARM™ JUNIOR NO. 343

- Fast on-off action with horizontal-moving lock handle
- Body is cast aluminum with steel parts
- 3" diameter mounting pad with two 1/4" - 20 holes
- 180° apart. Four slotted equally spaced 9/32" diameter mounting holes

## IDEAL FOR

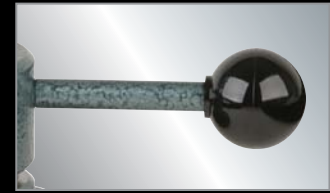
- Production Environments
- Assembly Lines
- Intricate Work
- Fab Shops
- Electronic MRO



POW-R-ARMS have been popular in production lines for decades. Seen here in use at Burroughs Corporation, circa 1956.



**MADE IN  
USA**



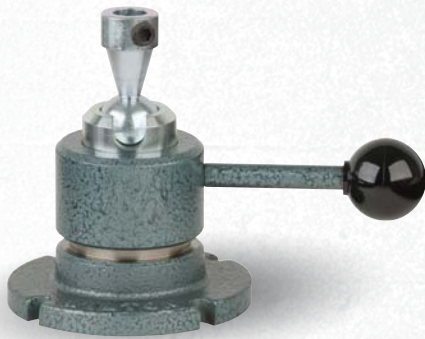
**ERGONOMIC HANDLES**



**MACHINED STEEL PARTS**

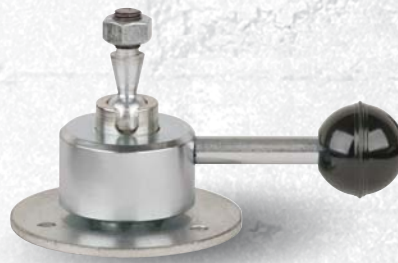


**CAST IRON & ALUMINUM  
BODY CONSTRUCTION**



**POW-R-ARM™  
VEEP NO. 344**

- Design provides more work-holding capacity and faster on-off action
- Horizontal handle is easily accessible and dwells below level of work
- Steel body is cadmium plated with cast iron base
- Mounting hole at top is 1/2" diameter x 1/2" deep with set screw to hold a fixture
- Four 1/4" diameter equally spaced slotted mounting holes
- For light production assembly or electronic applications



**POW-R-ARM™  
MIDGET NO. 345**

- Recommended for intricate electronic work including small printed circuits.
- Fast on/off action with horizontal handle
- All steel parts
- Mounting stud at top is 5/16-24 x 15/32" long



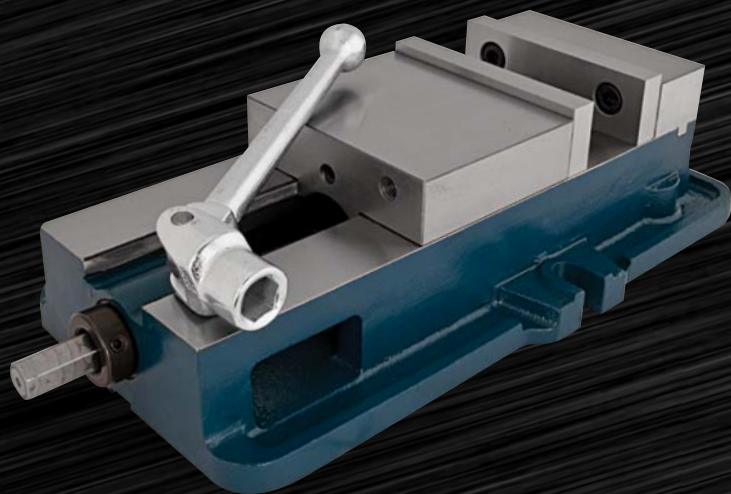
Stock No.	Model	Workholding Capacity (Lbs.)	Base Diameter (In.)	Diameter Bolt Circle (In.)	Extended Height (In.)
<b>POW-R-ARM MECHANICAL NO. 301</b>					
16240	301	70	5-15/16	5	10-1/2
<b>POW-R-ARM HYDRAULIC NO. 303</b>					
16300	303	150	5-7/8	5	10-1/2
<b>POW-R-ARM JUNIOR NO. 343</b>					
16180	343	30	4-1/4	2-1/4	5
<b>POW-R-ARM VEEP NO. 344</b>					
16120	344	20	3-3/4	3-3/8	4-1/4
<b>POW-R-ARM MIDGET NO. 345</b>					
16060	345	6	2-1/2	1-7/8	1-1/4





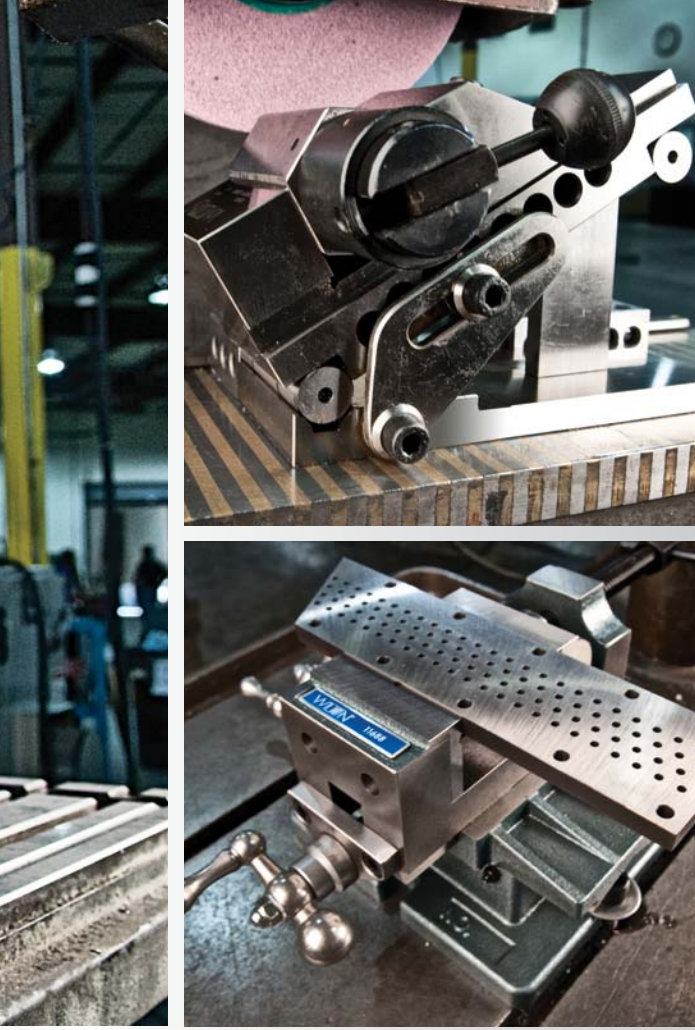
# WILTON MACHINE VISES

PRECISION WORKHOLDING

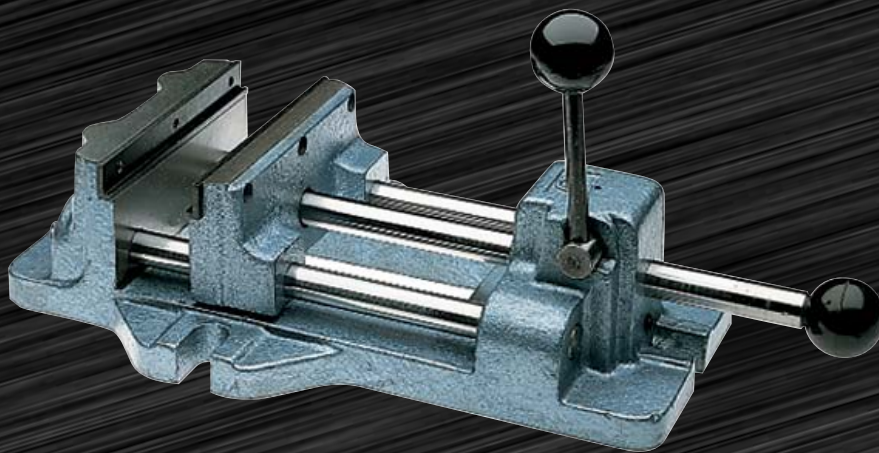


MILLING  
VISES





**Wilton® Machine Vises - the definition of durability and precision. With a vise for every application, our machine vise lineup is what you would expect from North America's leader in industrial bench vises.**



**DRILL  
PRESS  
VISES**



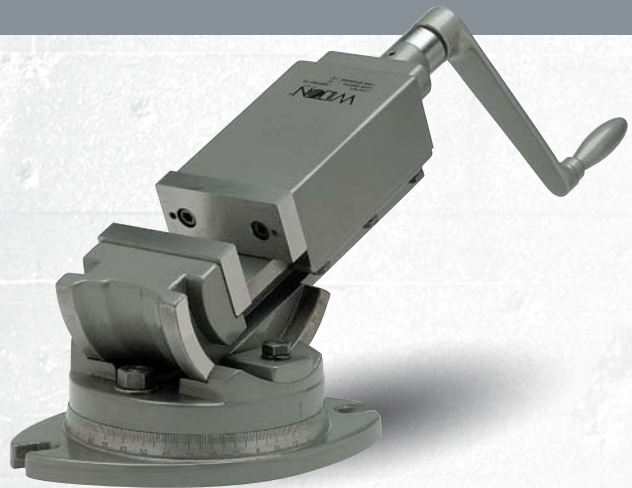
# SUPER PRECISION 3-AXIS & 2-AXIS MACHINE VISES

## ANGULAR SUPER PRECISION



### SUPER PRECISION 3-AXIS TILTING

- Perfect vise for 3-axis jobs in milling, drilling, grinding, shaping and jig boring
- Vise bodies are constructed of close grained, high tensile, seasoned alloy castings
- Ergonomically designed all steel handle with spring loaded ball attachment
- Durable polychromatic finish
- Hardness of Jaws  $55 \pm 3\text{HRC}$
- $360^\circ$  Swivel Base
- $45^\circ$  Tilting Range on Either Side
- $90^\circ$  Vertical Indexing



### SUPER PRECISION 2-AXIS ANGULAR

- Perfect vise for applications where the workpiece requires machining on an angle
- Vise bodies are constructed of close grained, high tensile, seasoned alloy castings
- All ground surfaces made to close tolerances
- Ergonomically designed all steel handle with spring loaded ball attachment
- Hardness of Jaws  $55 \pm 3\text{HRC}$
- $360^\circ$  Swivel Base
- $90^\circ$  Vertical and  $180^\circ$  Horizontal Indexing
- $90^\circ$  Tilting
- Perfectly Indexed For Angular Work

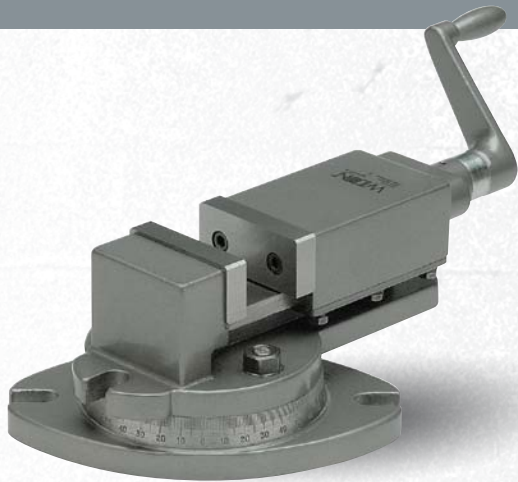
Stock No.	Model	Jaw Width (In.)	Jaw Depth (In.)	Jaw Opening (In.)
<b>SUPER PRECISION 3-AXIS TILTING</b>				
11700	TLT/SP-50	2	1	2
11701	TLT/SP-75	3	1-5/16	3
11702	TLT/SP-100	4	1-1/2	4
11803	TLT/SP-125	5	1-3/4	5
11804	TLT/SP-150	6	1-3/4	6

Stock No.	Model	Jaw Width (In.)	Jaw Depth (In.)	Jaw Opening (In.)
<b>SUPER PRECISION 2-AXIS TILTING</b>				
11703	AMV/SP-50	2	15/16	2
11704	AMV/SP-75	3	1-5/16	3
11705	AMV/SP-100	4	1-9/16	4
11706	AMV/SP-125	5	2	5
11707	AMV/SP-150	6	2	6



# SUPER PRECISION MILLING & SELF CENTERING VISES

## SUPER PRECISION



### SUPER PRECISION MILLING

- Ideal vise for jig boring, grinding and shaping jobs
- Fully graduated 360° swivel base
- Vise bodies are constructed of close grained, high tensile, seasoned alloy castings
- Vise body has a premium polychromatic finish which is scratch and rust proof
- Hardness of Jaws 55 ± 3HRC
- 180° Horizontal Indexing
- No jaw tilt or lift



### SUPER PRECISION SELF CENTERING

- Very convenient for use with drilling and milling machines where quick centering is required
- Allows for accurate centering of jobs automatically
- Special design allows accurate setting up of jobs with only a single machine setting
- Vise bodies are constructed of close grained, high tensile, seasoned alloy castings
- Swivel Base provided with positive locking and adjustable through 360°
- Hardness of Jaws 55 ± 3HRC
- Automatically adjusts work piece to center

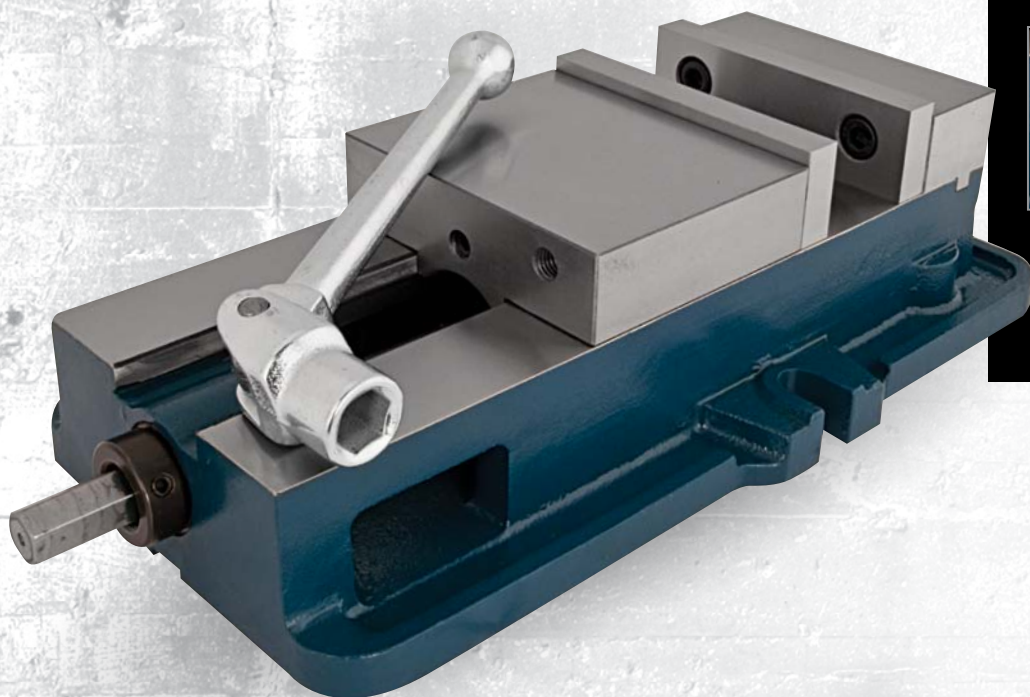
Stock No.	Model	Jaw Width (In.)	Jaw Depth (In.)	Jaw Opening (In.)
<b>SUPER PRECISION MILLING MACHINE VISES</b>				
11708	MMV/SP-50	2	1-5/16	2
11709	MMV/SP-100	4	1-1/2	4
11710	MMV/SP-150	6	1-3/4	6

Stock No.	Model	Jaw Width (In.)	Jaw Depth (In.)	Jaw Opening (In.)
<b>SUPER PRECISION SELF CENTERING VISE</b>				
11713	SCV/SP-100	4	1-1/2	4



# VERTI-LOCK<sup>®</sup> MACHINE VISE

ACCURATE, SOLID & TRUE



FLAME HARDENED BED



HARDENED JAWS



COOLANT DRAIN

## COMMON FEATURES

### WISE BODY:

- The ductile alloy vise body with flame-hardened bed provides solid work support, accuracy, and longevity

### WISE JAWS:

- The fixed jaw is rated at 85,000 PSI and the annealed, surface ground sliding jaw at 70,000 PSI

### SPINDLE:

- Fully enclosed spindle is protected from milling elements
- Cut from special alloy steel, hardened and ground

Stock No.	Model	Jaw Width (In.)	Jaw Opening (In.)
<b>STANDARD VISE ONLY</b>			
12390	1250N	5	4-1/2
63186	1275N	6	7-1/2
12375	1280N	8	7-1/2
<b>SWIVEL BASE ONLY</b>			
12285	5S	5	-
12290	6S	6	-
12295	8S	8	-



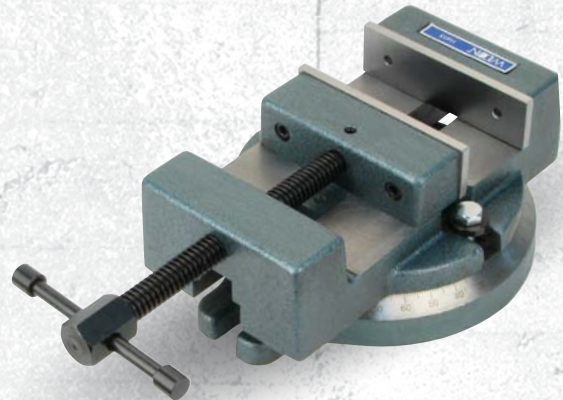
# MILLING & LOW PROFILE MACHINE VISES

## GENERAL PURPOSE



### MILLING MACHINE VISES

- General purpose vise for both milling and grinding applications
- Durable construction with fine grain cast iron castings and hardened steel vise jaws
- Ground Vise Bed for smooth, consistent and precise jaw movement
- Hardened V Grooved Jaws hold round shaped objects both vertically and horizontally
- Zinc plated ACME threaded screw provides consistent clamping pressure and durability



### LOW PROFILE MILLING MACHINE VISE

- General purpose vise for both milling and grinding applications
- Ideal for applications where low overall height is necessary
- Durable construction with fine grain cast iron castings and hardened smooth vise jaws

Stock No.	Model	Jaw Width (In.)	Jaw Opening (In.)	Jaw Depth (In.)	Replacement Jaw Insert No.
<b>MILLING: STATIONARY BASE</b>					
11602	MV4	4	4	1-3/4	11602-01
11604	MV6	6	6	2	11604-01
<b>MILLING: SWIVEL BASE</b>					
11603	MV4B	4	4	1-3/4	11603-01
11605	MV6B	6	6	2	11605-01

Stock No.	Model	Jaw Width (In.)	Jaw Opening (In.)	Jaw Depth (In.)	Replacement Jaw Insert No.
<b>LOW PROFILE: STATIONARY BASE</b>					
11614	ML45	4-1/2	4	1-1/4	11614-01
<b>LOW PROFILE: SWIVEL BASE</b>					
11615	ML45B	4-1/2	4	1-1/4	11615-01



# DRILL PRESS VISES

## GENERAL PURPOSE



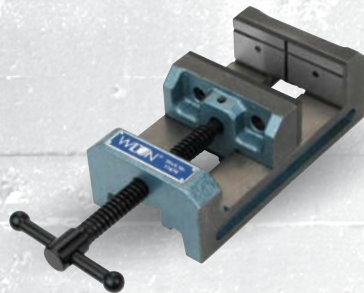
### DRILL PRESS VISES

#### 69997 - STANDARD

- 4" Jaw width opens to a maximum of 4-1/2"
- Grooved jaws provide a firm, secure grip on your work material
- Elongated holes for easy fastening onto drill presses or work surfaces

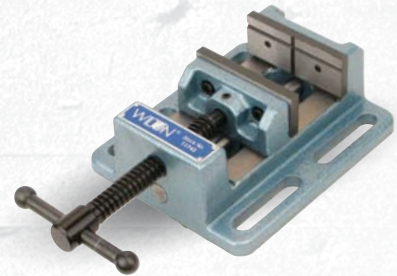
#### 69998 - ANGLED

- 0-90° tilting feature ideal for drilling, milling, tapping, and other machine related operations
- 3-1/2" wide jaw width opens to a maximum of 3-1/8"
- Hardened Steel Jaws provide a firm grip on your work material



### INDUSTRIAL DRILL PRESS VISES

- Designed for applications including drilling, tapping, reaming and grinding
- Durable base has bolt lugs for easy mounting on a machine table
- Hardened V Grooved Jaws hold round shaped objects both vertically and horizontally
- Zinc plated fine threaded screw provides smooth clamping action
- Durable construction with fine grain cast iron castings and hardened steel vise jaws
- Highly accurate with beds and bases parallel to  $\pm .001$ " on drill press vises and  $\pm .0001$ " on industrial drill press vises



### LOW PROFILE DRILL PRESS VISES

- Designed for applications including drilling, tapping and reaming
- Low profile clearance for increased working room on machine table
- Hardened V Grooved Jaws hold round shaped objects both vertically and horizontally
- Durable construction with fine grain cast iron castings and hardened steel vise jaws
- Black oxide coated ACME threaded screw provides consistent clamping pressure
- Highly accurate with beds and bases parallel to  $\pm .001$ "

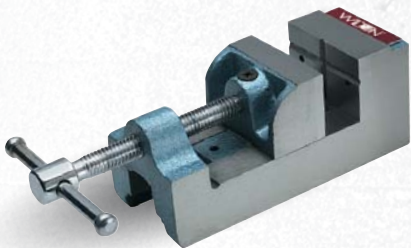
Stock No.	Model	Jaw Width (In.)	Jaw Opening (In.)	Jaw Depth (In.)	Replacement Jaw Insert No.
<b>DRILL PRESS VISES</b>					
69997	1203	3	3	1-1/4	-
69998	1204	4	4-11/16	1-5/16	-
<b>INDUSTRIAL DRILL PRESS VISES</b>					
11674	DI44	4	4	1-1/2	11674-01
11676	DI66	6	6	2	11676-01
11681	DGP15	1-3/4	1-1/2	1	11681-01
11683	DGP33	3	3	1-1/2	11683-01

Stock No.	Model	Jaw Width (In.)	Jaw Opening (In.)	Jaw Depth (In.)	Replacement Jaw Insert No.
<b>LOW PROFILE DRILL PRESS VISES</b>					
11743	LP3	3	3	1-1/8	11743-01
11744	LP4	4	4	1-1/2	11744-01
11746	LP6	6	6	2	11746-01
11748	LP8	8	8	2	11748-01



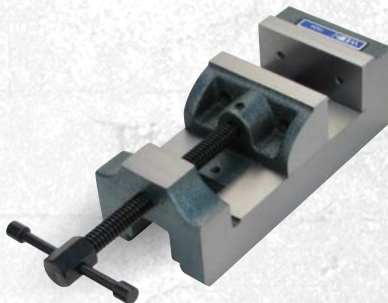
# DRILL PRESS VISES

## 3-SIDED WORKHOLDING



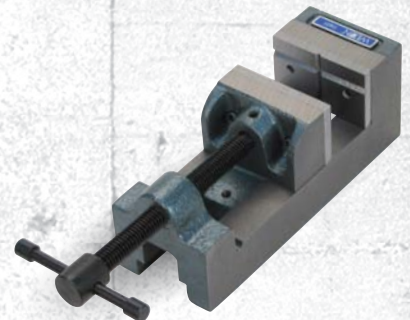
### STANDARD & ANGLE DRILL PRESS VISES

- Precision grinding of sides and front side face permits additional mounting positions for drilling, tapping or reaming
- Combining a smooth moveable jaw plate with a cross-patterned 90° V groove stationary jaw.
- The vise is recommended for general use.



### GROUND DRILL PRESS VISES

- Highly accurate drilling, tapping and reaming on all five sides of the vise
- Precision ground for square and parallel accuracy to  $\pm 0.001$ "
- Zinc plated ACME threaded screw provides consistent clamping pressure and durability



### PRECISION DRILL PRESS VISES

- Perfect for applications including drilling, tapping, reaming and grinding
- Rectangular shape provides flexible use on its base, side or end
- Zinc plated ACME threaded screw provides consistent clamping pressure and durability
- Durable construction with fine grain cast iron castings and hardened steel vise jaws
- Highly accurate with beds and bases parallel to  $\pm 0.001$ "
- Side groove ideal for mounting to machine table

Stock No.	Model	Jaw Width (In.)	Jaw Opening (In.)	Jaw Depth (In.)
<b>STANDARD PRESS VISES</b>				
12800	25	2-1/2	2-9/16	1-1/2
12860	30	3	3-1/8	1-3/4
<b>ANGLE PRESS VISES</b>				
12850	25A	2-1/2	2-1/2	1-1/2
12870	30A	3-1/8	3-1/8	1-3/4

Stock No.	Model	Jaw Width (In.)	Jaw Opening (In.)	Jaw Depth (In.)
<b>PRECISION DRILL PRESS VISES</b>				
11620	DP15	1-1/2	1-1/2	1
11621	DP22	2 3/8	2-1/2	1-1/2
11624	DP44	4	4	1-3/4
<b>GROUND DRILL PRESS VISES</b>				
11631	GR15	1-1/2	1-5/8	1
11632	GR25	2-7/16	2 5/8	1-1/2
11634	GR44	4	4	1-3/4



# ANGLED DRILL PRESS VISES

## PRECISE ANGLED DRILLING



### CRADLE STYLE ANGLE DRILL PRESS VISE

- Designed for applications including drilling, tapping and reaming requiring angle setup
- Cradle design with 90° vertical indexing, scaled in 1° increments
- Side tommy bar allows secure locking at any increment from 0° - 90°
- Pin hard stops at 0°, 15°, 30°, 45°, 60°, 75° and 90° for common applications
- Durable construction with fine grain cast iron castings and hardened smooth vise jaws



### INDUSTRIAL ANGLE VISES - SWIVEL BASE

- Designed for heavy applications requiring angle setup including drilling, tapping and reaming
- Full 90° indexing from horizontal to vertical for fast adjusting and lock down
- Hardened V Grooved Jaws hold round shaped objects both vertically and horizontally
- Durable construction with fine grain cast iron castings and hardened jaws
- Black oxide coated ACME threaded screw provides consistent clamping pressure

Stock No.	Model	Jaw Width (In.)	Jaw Opening (In.)	Jaw Depth (In.)	Replacement Jaw Insert No.
<b>CRADLE STYLE ANGLE DRILL PRESS VISE</b>					
11753	CR3	3	3	1-1/8	11753-01
11754	CR4	4	4	1-1/2	11754-01

Stock No.	Model	Jaw Width (In.)	Jaw Opening (In.)	Jaw Depth (In.)	Replacement Jaw Insert No.
<b>INDUSTRIAL ANGLE VISES - SWIVEL BASE</b>					
11774	CR3	3	3	1-1/8	11774-01
11776	CR4	4	4	1-1/2	11776-01



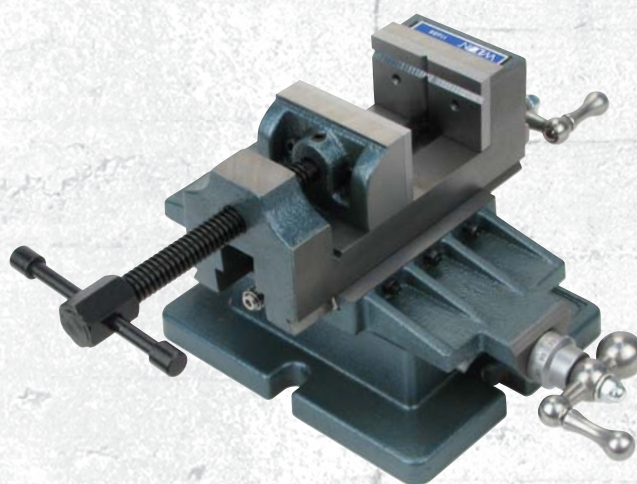
# 2 AXIS DRILL PRESS VISES

## ACCURATE IN-LINE DRILLING



### CROSS SLIDE DRILL PRESS VISES

- Accurately moves your workpiece horizontal and longitudinal for precise positioning
- Cast side knobs accurately dial in .1mm increments
- Hardened V Grooved Jaws hold round shaped objects both vertically and horizontally
- Durable construction with fine grain cast iron castings
- Black oxide coated screw provides consistent clamping pressure
- Durable base has 5 bolt lugs for easy mounting on a machine table



### PRECISION X/Y AXIS DRILL PRESS VISE

- Accurately moves your workpiece horizontal and longitudinal for precise positioning
- Solid steel ball crank handles accurately dial in .001" increments
- Hardened V Grooved Jaws hold round shaped objects both vertically and horizontally
- Durable construction with fine grain cast iron castings and hardened steel vise jaws
- Zinc plated ACME threaded screw provides consistent clamping pressure and durability

Stock No.	Model	Jaw Width (In.)	Jaw Opening (In.)	Jaw Depth (In.)	X-Travel (In.)	Y-Travel (In.)	Replacement Jaw Insert No.
<b>CROSS SLIDE DRILL PRESS VISES</b>							
11693	CS3	3	3	1-1/8	4-9/10	4-9/10	11693-01
11694	CS4	4	4	1-3/8	4-9/10	4-9/10	11694-01
11695	CS5	5	5	1-1/2	5-9/10	5-9/10	11695-01
11696	CS6	6	6	2	7-9/10	7-9/10	11696-01
11698	CS8	8	8	2	7-9/10	7-9/10	11698-01

Stock No.	Model	Jaw Width (In.)	Jaw Opening (In.)	Jaw Depth (In.)	X-Travel (In.)	Y-Travel (In.)	Replacement Jaw Insert No.
<b>PRECISION X/Y AXIS DRILL PRESS VISE</b>							
11688	DPX3	3	3	1-3/4	3-1/2	4	11688-01



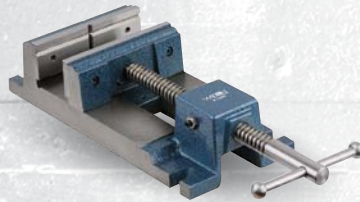
# DRILL PRESS VISES

## VERSATILITY AND SPEED



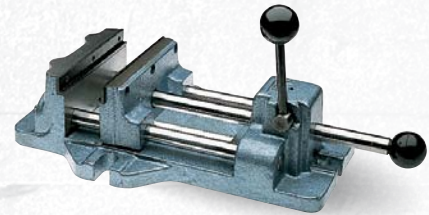
### SUPER PRECISION DRILL PRESS VISES

- Rugged design makes these vises perfect for even the most difficult of drilling, tapping and reaming operations.
- Body made from close grain aged cast iron
- Ground vise bed for smooth and consistent jaw movements
- Jaws are hardened and grounded, with cross patterned 90° V-grooves in the stationary jaw facilitating hold of round pieces both horizontally and vertically
- Hardness of jaws 55 + 3 HRC



### VERSATILE DRILL PRESS VISES

- Rapid acting nut disengages spindle for quick adjustments
- Made from high grade cast iron
- Ground vise bed for smooth, consistent jaw movement
- Hardened top V-groove jaws
- Rugged design and large workload capacity



### CAM ACTION DRILL PRESS VISES

- Simple push or pull on the center bar knob sets the jaw in position
- Easy press locking lever cams the jaw ahead 3/32", exerting a holding pressure that is adjustable from 400 to 1100 lbs.
- Base is designed for clear through drilling applications
- Unique top locking lever can be raised or lowered to tighten or loosen against the work piece.

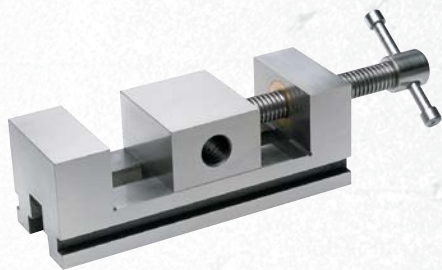
Stock No.	Model	Jaw Width (In.)	Jaw Opening (In.)	Jaw Depth (In.)
<b>SUPER PRECISION</b>				
11718	DPV/80	3-3/16	3-1/2	1
11719	DPV/100	4	4	1-1/4
<b>VERSATILE-CONTINUOUS NUT</b>				
63238	1335	3	2-3/4	1-7/8
63239	1345	4	4	2-1/8
63240	1360	5	5	2-1/8
<b>VERSATILE-RAPID ACTING NUT</b>				
63241	1435	3-1/2	4-1/4	1-3/4
63242	1445	4-1/2	4-3/4	1-7/8
63243	1460	6	6-3/4	2-1/8

Stock No.	Model	Jaw Width (In.)	Jaw Opening (In.)	Jaw Depth (In.)
<b>CAM ACTION</b>				
13400	1203	3	3	1-1/4
13401	1204	4	4-11/16	1-5/16
13402	1206	6	6-3/16	1-13/16
13403	1208	8	8-3/16	2



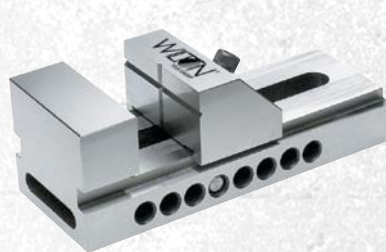
# SCREW-LESS & TOOL MAKERS VISES

## ACCURACY IN SURFACE GRINDING



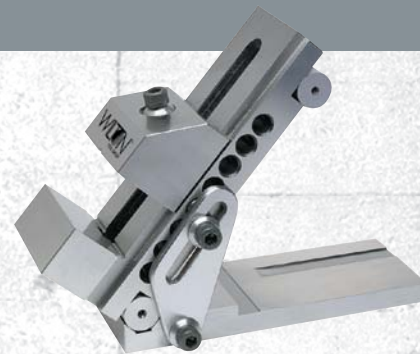
### SUPER PRECISION TOOL MAKERS STEEL VISE

- Made from specially selected alloy steel
- Heat treated for hardness
- Hardness 50 to 55 HRC
- Every part is precision ground square and parallel within 0.0002"
- Minute Angle Step of 0.2"
- Body dimensions are 7-3/32" x 2-3/4" x 33-11/32"



### SUPER PRECISION TOOL MAKERS SCREWLESS VISES

- All steel body
- Squareness and parallelism to within 0.0004"
- Rapid positioning notches
- V groove in sliding jaws hold work pieces securely
- Hardness of 50 to 55HRC



### SUPER PRECISION SINE VISES

- High precision, solid one-piece vise mounted onto precision hinged bottom plate
- Hardness of jaws 50 to 55 HRC
- Jaw can be opened or closed without unbolting from work surface
- Sine Range: 0 - 60°
- Minute angle step of 0.2"

Stock No.	Model	Jaw Width (In.)	Jaw Opening (In.)	Jaw Depth (In.)
<b>SUPER PRECISION TOOL MAKERS STEEL VISE</b>				
11716	TMV/ST/4	2-3/4	3	1-9/16
<b>SUPER PRECISION TOOL MAKERS SCREW-LESS VISES</b>				
11714	TMV/2	2	3-1/8	1
11715	TMV/23	3	3-3/4	1-3/8

Stock No.	Model	Jaw Width (In.)	Jaw Opening (In.)	Jaw Depth (In.)
<b>SUPER PRECISION SINE VISES</b>				
11717	SNV/6	2-3/4	3-3/4	1-3/8





# WILTON L-CLAMPS

FOR SERIOUS WELDERS ONLY



COPPER PLATED  
L-CLAMPS



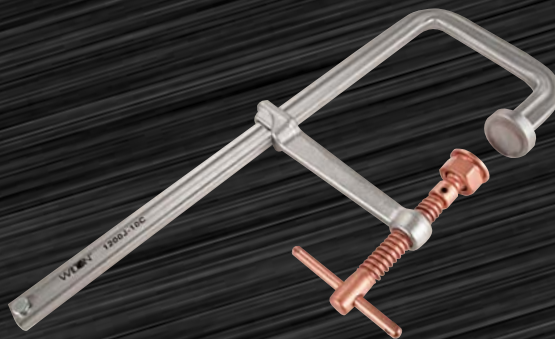




**Wilton's full line of welders' choice L-Clamps from 1000 to 4800 lbs. of clamping force has gotten even better. With the newest additions of Lever clamps, J-Series Clamps, and Deep Reach Clamps, there is an L-Clamp for every welding job. Built with you in mind, we coated our L-Clamps to resist welding spatter and ensure you get the longest lasting welding clamp on the market.**



**CLASSIC  
L-CLAMPS**



**SPECIALTY  
CLAMPS**

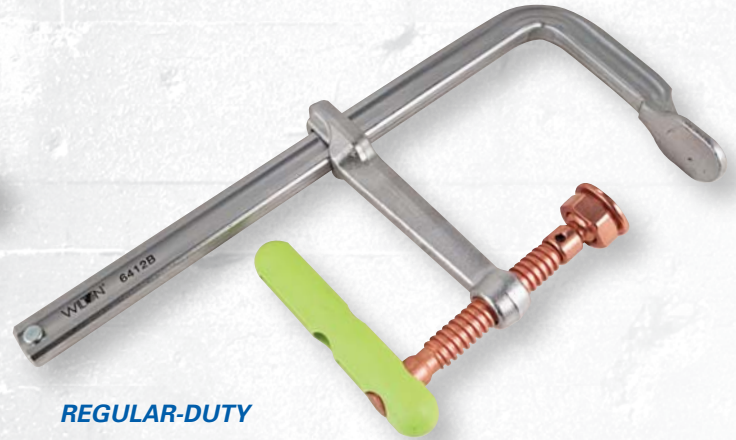


# WILTON® COPPER PLATED SPARK-DUTY™ L-CLAMPS

DESIGNED FOR THE SERIOUS WELDER



HEAVY-DUTY



REGULAR-DUTY

## FEATURES

### COPPER PLATED SPINDLES:

- Unique copper plating resists welding spatter unlike other spindles
- Reduce need to replace spatter-damaged spindles

### 6" – 48" CAPACITY:

- Fit a Wide Variety of Applications
- Perfect for Where Extreme Throat Depth is Necessary

### FORGED SLIDING ARM:

- Designed For Quick Clamping for Greater Efficiency and Reduced Setup Time

### PERMA-PADS®:

- Pad Tilts Up to 36° with Ball Joint for Firm Gripping Action on Angular Surfaces

### REPLACEABLE PARTS:

- Hex Nut Design Makes Replacing PERMA-PADS® and Spindles Easy

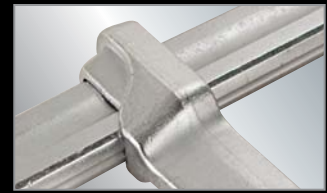
### STURDY TOMMY BAR:

- Copper Plated Sliding Pin T-Handle Engineered for Durability with Rounded Ends For Comfort

Stock No.	Model	Nominal Opening Capacity (In.)	Throat Depth (In.)	Nominal Rail Size (In.)	Clamp Pressure (In.)	Nominal Spindle Diameter (In.)
<b>LIGHT-DUTY L-CLAMPS WITH WILTON-GRIP® HANDLES</b>						
63249	6306B	6	3	5/8 x 5/16	1000	9/16
63250	6308B	8	4	3/4 x 3/8	1000	5/8
63251	6310B	10	4-3/4	7/8 x 7/16	1500	5/8
63252	6312B	12	5-1/2	1 x 15/32	1600	3/4
63253	6316B	16	4-3/4	1 x 15/32	1600	3/4
63254	6320B	20	4-3/4	1 x 15/32	1600	3/4
63255	6324B	24	4-3/4	1 x 15/32	1600	3/4
63256	6332B	32	4-3/4	1-11/16 x 1/2	2000	3/4
63257	6340B	40	4-3/4	1-11/16 x 1/2	2000	3/4
63258	6348B	48	4-3/4	1-11/16 x 1/2	2000	3/4
<b>REGULAR-DUTY L-CLAMPS WITH WILTON-GRIP® HANDLES</b>						
63259	6410B	10	4-3/4	1-3/16 x 9/16	2600	3/4
63260	6412B	12	5-1/2	1-3/16 x 9/16	2600	3/4
63261	6416B	16	4-3/4	1-3/16 x 9/16	2600	3/4
63262	6420B	20	5-1/2	1-3/16 x 9/16	2600	3/4
63263	6432B	32	4-3/4	1-3/16 x 9/16	2600	3/4
63264	6440B	40	4-3/4	1-3/16 x 9/16	2600	3/4
<b>HEAVY-DUTY F-CLAMPS</b>						
63267	6512B	12	7	1-9/16 x 3/4	4800	7/8
63268	6516B	16	7	1-9/16 x 3/4	4800	7/8
63269	6520B	20	7	1-9/16 x 3/4	4800	7/8
63270	6524B	24	7	1-9/16 x 3/4	4800	7/8
63271	6532B	32	7	1-9/16 x 3/4	4800	7/8
63272	6540B	40	7	1-9/16 x 3/4	4800	7/8
63273	6548B	48	7	1-9/16 x 3/4	4800	7/8



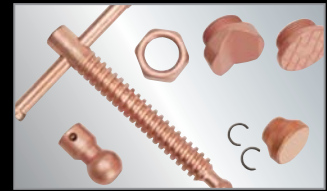
# COPPER PLATED SHOE CLAMP



**FORGED SLIDE ARM**



**PERMA-PADS®**



**REPLACEABLE PARTS**

## SHOE CLAMP FEATURES

### RAPID LOADING:

- Clamp rails slide easily in and out of shoe
- Forged arm slides up and down stationary arm for quick adjustments

### BOLT OR WELD-ON SHOE:

- Bolt or weld shoe to workstation for highest stability

### COPPER PLATED:

- Spindles and pads are copper plated to provide resistance to welding splatter and corrosion

## IDEAL FOR

- Production work
- Repetitive welding
- High-efficiency

Stock No.	Model	Nominal Opening Capacity (In.)	Throat Depth (In.)	Nominal Rail Size (In.)	Clamp Pressure (In.)	Nominal Spindle Diameter (In.)
<b>WELDERS SHOE CLAMP SYSTEM</b>						
63295	-	8-1/2	5-1/2	1-3/16 x 9/16	2600	3/4





# LEVER, DEEP REACH AND J-SERIES L-CLAMPS

## SPECIALTY L-CLAMPS



LEVER

DEEP REACH

J-SERIES



QUICK RATCHETING DESIGN



CLAMP IRREGULAR OBJECTS



EXTRA DEEP REACH

## FEATURES

### LEVER CLAMPS:

- Quick ratcheting design for spindle free operation
- Wilton® blue handle made of heavy duty aluminum, not plastic, to withstand heat

### J-SERIES F-CLAMPS:

- J shaped rail design reaches around irregular shaped objects
- Ideal for holding I-beams during welding
- Replaceable Perma-Pads for use of V-groove, serrated, or plain pad accessories

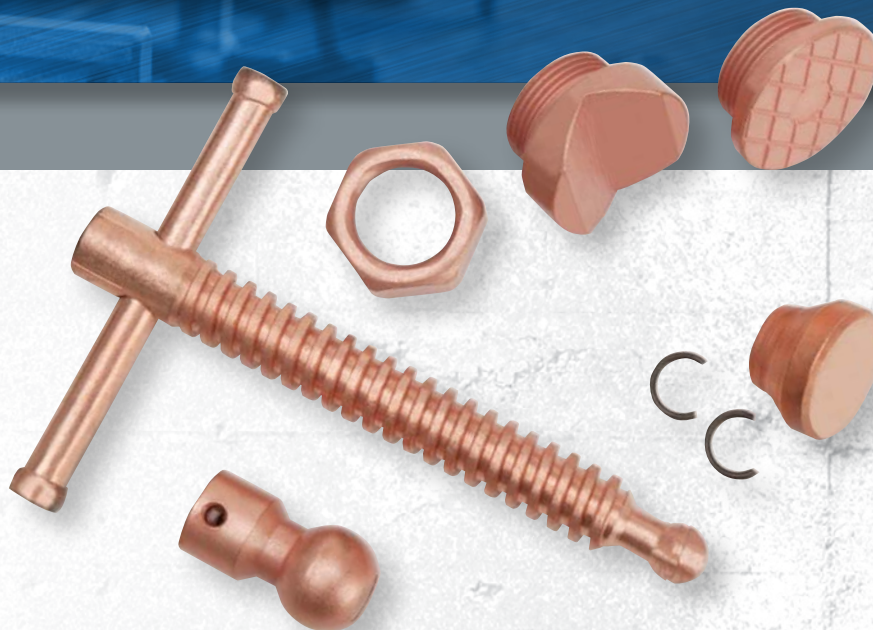
### DEEP REACH L-CLAMPS:

- Increased throat size for deeper reach
- Replaceable Perma-Pads for use of V-groove, serrated, or plain pad accessories

Stock No.	Model	Nominal Opening Capacity (In.)	Throat Depth (In.)	Nominal Rail Size (In.)	Clamp Pressure (In.)	Nominal Spindle Diameter (In.)
<b>LEVER CLAMPS</b>						
86800	LC4	4	2-3/8	1/2 x 1/4	350	-
86810	LC8	8	4	3/4 x 3/8	750	-
86820	LC12	12	5-1/2	1 x 1/2	1100	-
86830	LC20	20	4-3/4	1 x 1/2	1200	-
<b>J-SERIES L-CLAMPS</b>						
86700	DT2400S-12C	12	8	1-3/16 x 9/16	1770	3/4
86710	DT2400S-24C	24	8	1-3/16 x 9/16	1770	3/4
<b>DEEP REACH L-CLAMPS</b>						
86900	1200J-10C	10	4-3/4	7/8 x 3/8	1200	5/8
86910	2400J-12C	12	5-1/2	1-3/16 x 9/16	2400	3/4
86920	4800J-20C	20	7	1-9/16 x 3/4	4800	7/8



# COPPER PLATED SPARK-DUTY™ L-CLAMP ACCESSORIES



Stock No.	Model	Plain Pad Stock No.	Serrated Pad Stock No.	V-Pad Stock No.	Nut Stock No.	Joint with Spring Pin Stock No.	Spindle and T-Handle with Spring Pin Stock No.
<b>LIGHT-DUTY F-CLAMPS WITH WILTON-GRIP® HANDLES</b>							
63249	6306B	-	-	-	-	-	-
63250	6308B	2909100	2909200	2909300	1701700	1701500	1701600
63251	6310B	2909100	2909200	2909300	1701700	1701500	1701600
63252	6312B	2909101	2909201	2909301	1701701	1701501	1701601
63253	6316B	2909101	2909201	2909301	1701701	1701501	1701601
63254	6320B	2909101	2909201	2909301	1701701	1701501	1701601
63255	6324B	2909101	2909201	2909301	1701701	1701501	1701601
63256	6332B	2909101	2909201	2909301	1701701	1701501	1701601
63257	6340B	2909101	2909201	2909301	1701701	1701501	1701601
63258	6348B	2909101	2909201	2909301	1701701	1701501	1701601
<b>REGULAR-DUTY F-CLAMPS WITH WILTON-GRIP® HANDLES</b>							
63259	6410B	2909102	2909202	2909302	1701702	1701502	1701602
63260	6412B	2909102	2909202	2909302	1701702	1701502	1701602
63261	6416B	2909102	2909202	2909302	1701702	1701502	1701602
63262	6420B	2909102	2909202	2909302	1701702	1701502	1701602
63263	6432B	2909102	2909202	2909302	1701702	1701502	1701602
63264	6440B	2909102	2909202	2909302	1701702	1701502	1701602
<b>HEAVY-DUTY F-CLAMPS</b>							
63267	6512B	2909102	2909202	2909302	1701702	1701502	1701603
63268	6516B	2909102	2909202	2909302	1701702	1701502	1701603
63269	6520B	2909102	2909202	2909302	1701702	1701502	1701603
63270	6524B	2909102	2909202	2909302	1701702	1701502	1701603
63271	6532B	2909102	2909202	2909302	1701702	1701502	1701603
63272	6540B	2909102	2909202	2909302	1701702	1701502	1701603
63273	6548B	2909102	2909202	2909302	1701702	1701502	1701603



# WILTON® CLASSIC™ L-CLAMPS

DESIGNED FOR THE SERIOUS WELDER



## FEATURES

### BLACK OXIDE SPINDLES:

- Coated spindles resist wear and tear while impeding rust

### 6"- 24" CAPACITY:

- Fit a Wide Variety of Applications
- Perfect for Where Extreme Throat Depth is Necessary

### FORGED SLIDING ARM:

- Designed For Quick Clamping for Greater Efficiency and Reduced Setup Time

### STURDY TOMMY BAR:

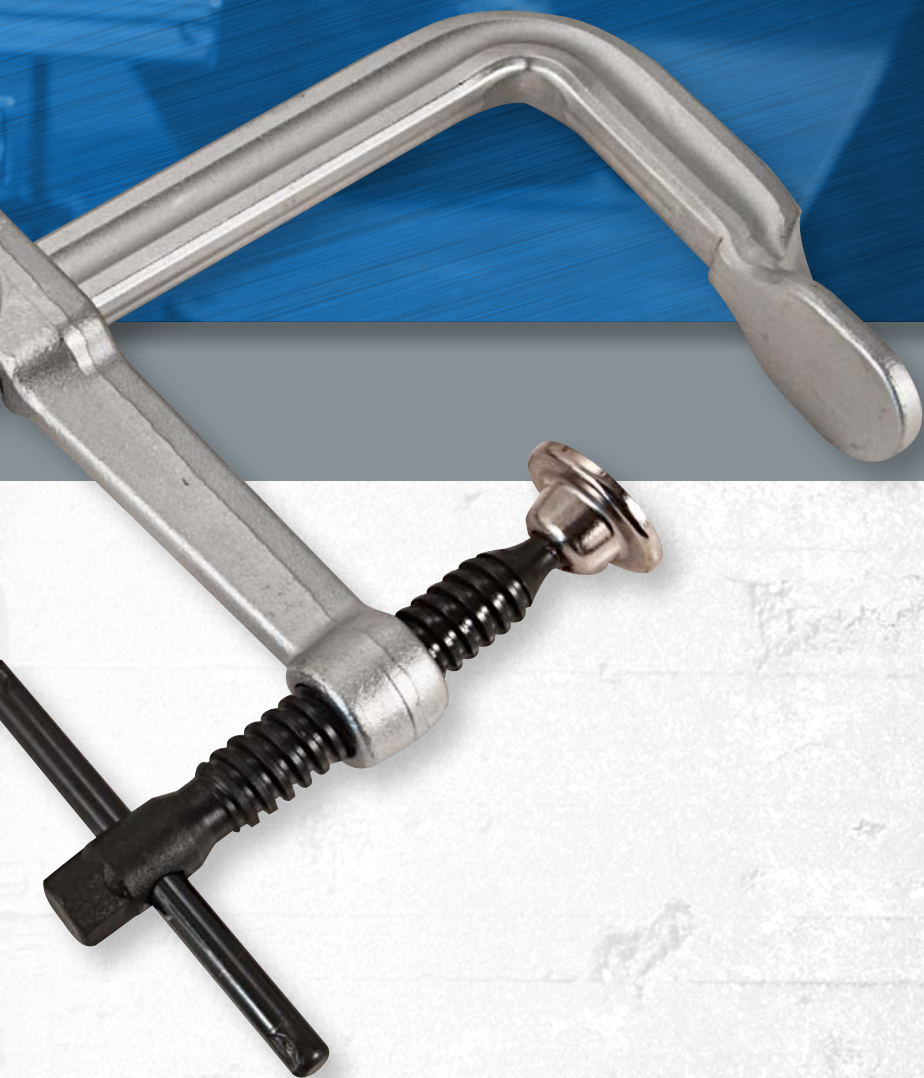
- Copper Plated Sliding Pin T-Handle Engineered for Durability with Rounded Ends For Comfort

## IDEAL FOR

- Fabrication
- Welding
- Repetitive Clamping







**FORGED SLIDE ARM**



**STURDY TOMMY BAR**



**OSCILLATING PAD**

Stock No.	Model	Nominal Opening Capacity (In.)	Throat Depth (In.)	Nominal Rail Size (In.)	Clamp Pressure (In.)	Nominal Spindle Diameter (In.)
<b>SPARK-DUTY F-CLAMPS</b>						
63056	606	6	4-3/4	7/8 x 7/16	1500	1/2
63057	608	8	4-3/4	7/8 x 7/16	1500	5/8
63058	610	10	4-3/4	1-3/16 x 9/16	2600	5/8
63059	612	12	4-3/4	1-3/16 x 9/16	2600	3/4
63191	616	16	4-3/4	1-3/16 x 9/16	2600	3/4
63192	620	20	4-3/4	1-3/16 x 9/16	2600	3/4
63193	624	24	4-3/4	1-3/16 x 9/16	2600	3/4





# WILTON® C-CLAMPS

QUALITY CLAMPING SOLUTIONS



**BRUTE FORCE™  
C-CLAMPS**



**400 SERIES  
C-CLAMPS**



**4400 & 800  
C-CLAMPS**





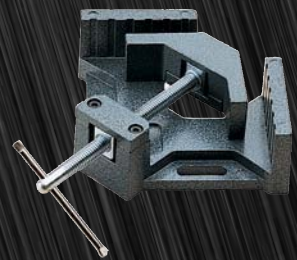
**Tried and true, Wilton® C-Clamps have been a part of American history stemming all the way back to the automotive boom in the 1950's. To this day, through evolutionary innovation, you will find the clamp for your application in our offering of over 135 different C-Clamps.**



**CARRIAGE  
C-CLAMPS**



**JUNIOR  
C-CLAMPS**



**SPECIALTY  
CLAMPS**



# BRUTE FORCE™ O-SERIES C-CLAMPS

## BRIDGE / BOILER CLAMPS

**MADE IN  
USA**



**SHORT SPINDLE**

**NOTE:**

• Meets federal spec # GGG-C-406D, Type I, Class D Heavy Service



**FULL LENGTH SPINDLE**



**SQUARE SPINDLE HEAD**



**40,000 LBS. OF PURE  
CLAMPING PRESSURE**



## FEATURES

**HIGHEST CLAMPING PRESSURE:**

- Ranging Up to 40,000 lbs. Standing Up to the Demands of the Heaviest Industrial Applications

**SPINDLE:**

- Full Length, Machined from a Single Piece of Square, Cold Drawn Steel, Hardened and Tempered

**SQUARE SPINDLE HEAD:**

- Stands Up to Heavy Wrench Tightening Use, Including Both Hand and Torque Wrench

## IDEAL FOR

- Heavy Construction
- Bridge Building
- Heavy Fabrication
- Ship Building

Stock No.	Model	Nominal Opening Capacity (In.)	Throat Depth (In.)	Clamp Pressure (Lbs.)	Spindle Size(In.)	Replacement Spindle No.
<b>BRUTE FORCE - O SERIES</b>						
14518	1 F.C.	0 - 1-3/8	1-3/32	5600	7/16	20203-35
14527	1-1/2 F.C.	0 - 1-3/4	1-3/16	8750	5/8	20203-35
14536	2 F.C.	0 - 2-3/8	1-7/8	12,500	3/4	07142-35
14545	3 F.C.	0 - 3-5/16	2-5/16	16,250	7/8	07161-35
14554	4 F.C.	0 - 4-1/2	2-3/4	20,000	1	07147-35
14563	5 F.C.	0 - 5-1/4	3-1/8	23,800	1	07162-35
14572	6 F.C.	0 - 6-1/4	3-3/8	27,500	1-1/8	07149-35
14581	8 F.C.	0 - 8-1/2	3-5/8	31,250	1-1/4	07150-35
14590	10 F.C.	0 - 10-1/4	3-15/16	35,000	1-1/4	07151-35
14599	12 F.C.	0 - 12-3/8	4-1/4	40,000	1-1/4	07152-35
<b>BRUTE FORCE - O SERIES SHORT SPINDLE</b>						
27204	2-SS	1/4 - 2	1-7/8	12,500	3/4	-
27205	3-SS	1/4 - 3-1/4	2-1/2	16,250	7/8	-
27206	4-SS	1/2 - 4-1/2	2-3/4	20,000	1	-
27207	5-SS	2-1/4 - 5-1/2	3-1/8	23,800	1	-
27208	6-SS	1-1/2 - 6-1/2	3-3/8	27,500	1-1/8	-
27209	8-SS	3-1/2 - 8-1/2	3-3/4	31,250	1-1/4	-
27210	10-SS	6-1/4 - 10-1/2	4-1/8	35,000	1-1/4	-
27211	12-SS	7-1/2 - 12-1/2	4-1/2	40,000	1-1/4	-



# BRUTE FORCE™ 100-SERIES C-CLAMPS

15,000 LBS. OF PRESSURE

**MADE IN  
USA**



**NOTE:**

• Meets federal spec # GGG-C-406D, Type I, Class B Medium Service

## FEATURES

**SPINDLE:**

- Full Length, Machined from a Single Piece of Square, Cold Drawn Steel, Hardened and Tempered

**SQUARE HEAD HANDLE:**

- Designed For Maximum Torque and Flexible Usage
- Can Be Tightened by Hand or Wrench

## IDEAL FOR

- Heavy Construction
- Mining and Extraction
- Machine Tool Fixtures
- Press Work



**HARDENED AND  
TEMPERED STEEL  
SPINDLE**



**REPLACABLE  
PERMA-PADS**



**SQUARE HEAD HANDLE**



Stock No.	Model	Nominal Opening Capacity (In.)	Throat Depth (In.)	Clamp Pressure (Lbs.)	Spindle Size (In.)
<b>BRUTE FORCE - 100 SERIES</b>					
14114	102	0 – 2	1-1/2	7,500	9/16
14128	103	0 – 3	2	8,750	5/8
14142	104	0 – 4	2-1/4	10,000	3/4
14156	106	2 – 6	2-1/2	11,250	3/4
14170	108	4 – 8	2-3/4	12,500	3/4
14184	110	6 – 10	2-7/8	13,750	3/4
14198	112	8 – 12	2-15/16	15,000	3/4

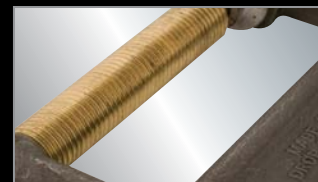
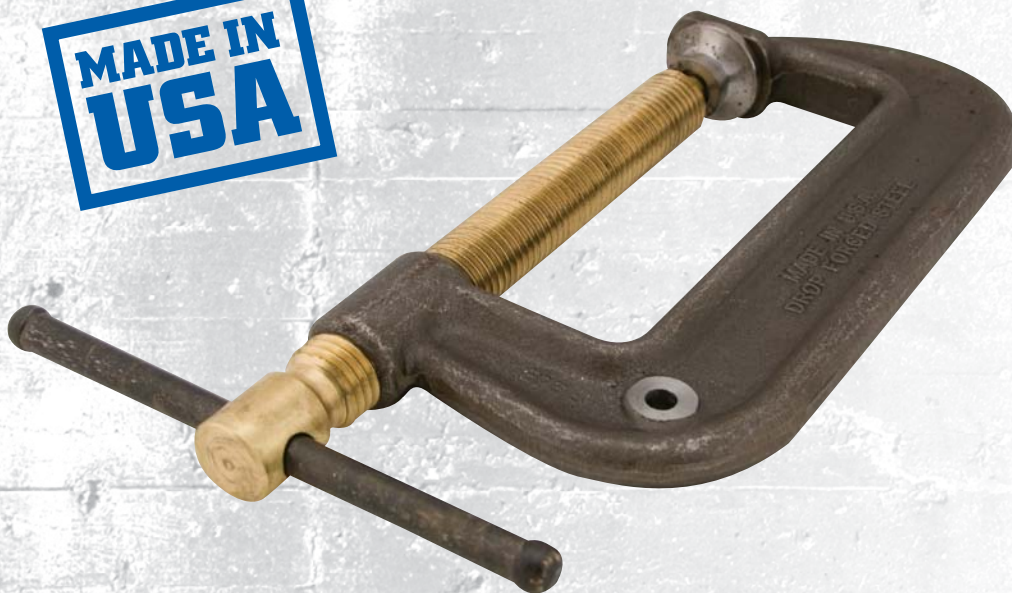
Stock No.	Replaceable Spindle No.	Replaceable Perma Pad No.
14114	1700010	2901300
14128	1700020	2901300
14142	1700030	2901310-1
14156	1700030	2901310-1
14170	1700030	2901310-1
14184	1700030	2901310-1
14198	1700030	2901310-1



# BRUTE FORCE™ 43 SERIES C-CLAMPS

DESIGNED FOR HEAVY WELDING

**MADE IN  
USA**



BRASS SPINDLE



GROUNDING CIRCLE



OSCILLATING HEAD



## FEATURES

### BRASS SPINDLE:

- Coated Spindle Resists Welding Spatter Extending the Life of the Clamp

### HIGH CLAMPING PRESSURE:

- Ranging Up to 12,500 lbs Standing Up to the Demands of the Heavy Industrial Welding Applications

### OSCILLATING HEAD:

- High Quality Steel Pad is Built to Last and Provide Firm Gripping Action on Angular Surfaces

Stock No.	Model	Nominal Opening Capacity (In.)	Throat Depth (In.)	Clamp Pressure (Lbs.)	Spindle Size(In.)
<b>BRUTE FORCE - 43 SERIES</b>					
20601	H43-4	0 - 4	2-1/2	10,000	7/8
20602	H43-6	0 - 6	2-3/4	11,250	1
20603	H43-8	2-3/16 - 8	2-3/4	12,500	1

## IDEAL FOR

- Heavy Steel Fabrication
- Industrial Welding

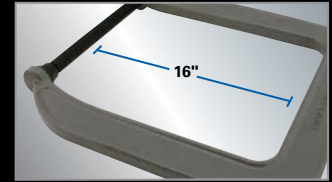


# SUPERCLAMPS™ 48 SERIES C-CLAMPS

**MASSIVE THROAT DEPTH**



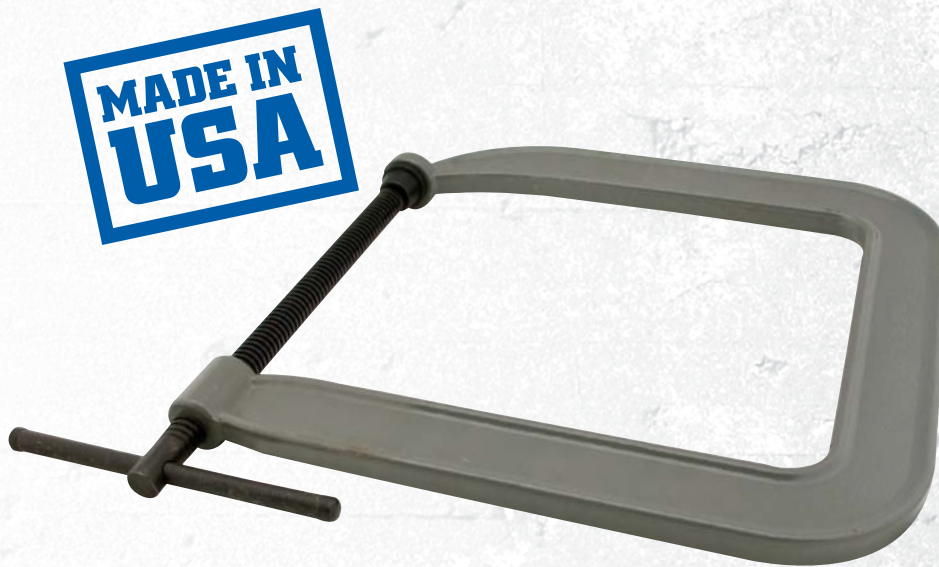
**OSCILLATING HEAD**



**MASSIVE 16" DEPTH**



**48 SERIES COMPARED TO  
STANDARD C-CLAMP**



**NOTE:**

• Meets federal spec # GGG-C-406D, Type I, Class B Very Light Service

## FEATURES

**DEEP CAPACITY:**

- Designed for Up to 16" Depths for Unique Applications

**OSCILLATING HEAD:**

- High Quality Steel Pad is Built to Last and Provide Firm Gripping Action on Angular Surfaces

## IDEAL FOR

- Extreme depth in workholding

Stock No.	Model	Nominal Opening Capacity (In.)	Throat Depth (In.)	Clamp Pressure (Lbs.)	Spindle Size(In.)
<b>SUPERCLAMPS® - 48 SERIES</b>					
21201	—	0 – 6	8	2,200	5/8
21202	—	0 – 8	12	1,800	3/4
21204	—	0 – 12	16	1,500	3/4



# USA 400 SERIES™ C-CLAMPS

MADE IN USA CLASSIC



CLASSIC



SPARK-DUTY™



COPPER PLATED



INNOVATIVE FRAME



STURDY TOMMY BAR



## FEATURES

### SPINDLES:

- Black-oxide and copper coated spindles and Perma-Pad® resist corrosion, and are replaceable

### INNOVATION:

- Innovative frame geometry for maximum strength

### FRAME DESIGN:

- Drop-forged steel frame, regular-duty with extra deep-throat

## IDEAL FOR

- Heavy Steel Fabrication
- Industrial Welding

Stock No.	Model	Nominal Opening Capacity (In.)	Throat Depth (In.)	Clamp Pressure (Lbs.)	Spindle Size(In.)
<b>USA MADE CLASSIC 400 SERIES</b>					
14014	402U	0 – 2	2	1400	9/16
14028	403U	0 – 3	2-3/8	3500	9/16
14042	404U	0 – 4	2-3/4	3500	9/16
14056	406U	0 – 6	3-5/8	6200	3/4
14070	408U	0 – 8	4-1/2	6600	3/4
14084	410U	0 – 10	5-3/8	6900	3/4
14098	412U	2 – 12	5-3/4	8000	3/4
<b>USA MADE SPARK-DUTY™ 400P</b>					
14015	402U-P	0 – 1-1/2	2	1400	9/16
14029	403U-P	0 – 2-1/8	2-3/8	3500	9/16
14043	404U-P	0 – 3	2-3/4	3500	5/8
14057	406U-P	0 – 4-1/4	3-5/8	6200	3/4
14071	408U-P	0 – 6-1/16	4-1/2	6600	3/4
14085	410U-P	0 – 8-1/4	5-3/8	6900	3/4
14099	412U-P	2 – 10-1/8	5-3/4	8000	3/4



# CLASSIC 400 SERIES C-CLAMPS

## DEEP THROAT CLAMPS



400 SERIES WITH  
WILTON-GRIP®

**NOTE:**

• Meets federal spec # GGG-C-406a, Type I, Class A, Grade a, Style 1 & 2



DROP FORGED FRAME



BLACK OXIDE COATING



WILTON-GRIP™



## FEATURES

**DROP FORGED:**

- Manufactured For Greater Strength Under Regular Strength Applications

**ACME ROLLED SPINDLE:**

- Threads Provide Continuous Smooth Operation for Faster Clamping Action and Maximum Strength

**BLACK OXIDE COATING:**

- Spindles and PERMA-PADS® are Treated to Resist Corrosion

## IDEAL FOR

- Steel Fabrication
- Industrial Maintenance
- Production
- Repair Operations

Stock No.	Model	Nominal Opening Capacity (In.)	Throat Depth (In.)	Clamp Pressure (Lbs.)	Spindle Size(In.)
<b>CLASSIC 400 SERIES™</b>					
14214	402	0 – 2-1/8	2-1/4	3500	9/16
14228	403	0 – 3	2-1/2	3500	9/16
14242	404	0 – 4-1/4	3-1/4	6200	3/4
14256	406	0 – 6-1/16	4-1/8	6600	3/4
14270	408	0 – 8-1/4	5	6900	3/4
14284	410	2 – 10-1/8	6	8000	3/4
14298	412	2 – 12-1/4	6-5/16	9300	7/8
<b>CLASSIC 400 SERIES™ WITH WILTON GRIP®</b>					
63153	404-STG	0 – 4-1/4	3-1/4	6200	3/4
63154	406-STG	0 – 6-1/16	4-1/8	6600	3/4
63155	408-STG	0 – 8-1/4	5	6900	3/4



# CLASSIC 400 SERIES™ HI-VIS SAFETY & HARGRAVE C-CLAMPS

SAFE AND ECONOMICAL



HIGH VIS YELLOW &  
V GROOVED ANVIL



OSCILLATING HEAD



REPLACEABLE PERMA-  
PAD ON HI VIS SERIES



**NOTE:**

• HARGRAVE C-Clamp meets federal spec # GGG-C-406D, Type I, Class A Light Service

## FEATURES

**HIGH VISIBILITY YELLOW:**

- Conforms to OSHA Safety Color Standard for Physical Hazards Regulation # 1910.144

**V GROOVED ANVIL:**

- Feature Allows Secure Holding of All Materials Including Rounds, Squares and Flats

**PATENTED DESIGN:**

- Frame Geometry Allows For Maximum Strength with Greater Throat Depth and Lower Weight

## IDEAL FOR

- Steel Fabrication
- Industrial Maintenance
- Production
- Repair Operations

Stock No.	Model	Nominal Opening Capacity (In.)	Throat Depth (In.)	Clamp Pressure (Lbs.)	Spindle Size(In.)
<b>400 SERIES HI-VIS SAFETY</b>					
14300	402-SF	0 – 2-1/8	2-1/4	3500	9/16
14301	403-SF	0 – 3	2-1/2	3500	9/16
14302	404-SF	0 – 4-1/4	3-1/4	6200	3/4
14303	406-SF	0 – 6-1/16	4-1/8	6600	3/4
14305	408-SF	0 – 8-1/4	5	6900	3/4
14306	410-SF	2 – 10-1/8	6	8000	3/4
14307	412-SF	2 – 12-1/4	6-5/16	9300	7/8
<b>400 SERIES HARGRAVE</b>					
20301	H402	0 – 2	2	3,500	1/2
20302	H403	0 – 3	2-3/8	3,500	5/8
20303	H404	0 – 4	2-3/4	6,200	3/4
20304	H406	0 – 6	3-5/8	6,600	3/4
20305	H408	0 – 8	4-1/2	6,900	3/4
20306	H410	0 – 10	5-3/8	8,000	7/8
20307	H412	0 – 12	5-3/4	9,500	7/8



# SPARK-DUTY™ 400SEP, 400P AND HI-VIS C-CLAMPS

**SPATTER RESISTANT COPPER**



**400SEP V GROOVE ANVIL**



**HI-VIS SAFETY  
YELLOW FRAME**



**COPPER PLATED SPINDLE  
AND PERMA-PADS®**



## FEATURES

### HIGH VISIBILITY YELLOW:

- Conforms to OSHA Safety Color Standard for Physical Hazards Regulation # 1910.144

### V GROOVED ANVIL (400SEP):

- Feature Allows Secure Holding of All Materials Including Rounds, Squares and Flats

### ACME ROLLED SPINDLE:

- Threads Provide Continuous Smooth Operation for Faster Clamping Action and Maximum Strength

### COPPER PLATED:

- Spindles and pads are copper plated to provide resistance to welding splatter and corrosion

## IDEAL FOR

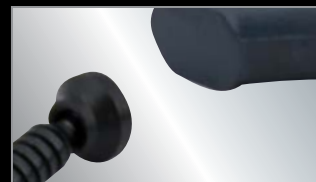
- Steel Fabrication
- Industrial Welders

Stock No.	Model	Nominal Opening Capacity (In.)	Throat Depth (In.)	Clamp Pressure (Lbs.)	Spindle Size(In.)
<b>SPARK-DUTY 400SEP</b>					
15978	402SEP	0 – 2-1/8	2-5/16	3500	9/16
15979	403SEP	0 – 3	2-1/2	3500	5/8
15980	404SEP	0 – 4-1/2	3-1/4	6200	3/4
15981	406SEP	0 – 6-1/16	4-1/8	6600	3/4
15982	408SEP	0 – 8-1/4	5	6900	3/4
15983	410SEP	2 – 10-1/8	6	8000	3/4
15984	412SEP	2 – 12-1/4	6-5/16	9300	7/8
<b>SPARK-DUTY 400P</b>					
14215	402-P	0-2-1/8	2-5/8	3,500	9/16
14229	403-P	0-3	2-1/2	3,500	5/8
14243	404-P	0-4-1/4	3-1/4	6,200	3/4
14257	406-P	0-6-1/16	4-1/8	6,600	3/4
14271	408-P	0-8-1/4	5	6,900	3/4
14285	410-P	2-10-1/8	6	8,000	3/4
14299	412-P	2-12-1/4	6-5/16	9,300	7/8
<b>SPARK-DUTY 400CS HARGRAVE HI-VIS</b>					
20479	H402CS	0 – 2	2	3500	1/2
20481	H403CS	0 – 3	2-3/8	3500	5/8
20483	H404CS	0 – 4	2-3/4	6200	3/4
20484	H406CS	0 – 6	3-5/8	6600	3/4
20485	H408CS	0 – 8	4-1/2	6900	3/4
20486	H410CS	0 – 10	5-3/8	8000	7/8
20487	H412CS	0 – 12	5-3/4	9500	7/8



# 4400 & 800 SERIES C-CLAMPS

## SQUARE THROAT AND STANDARD DEPTH



**PERMA-PADS®**



**BLACK OXIDE COATING**



**DROP FORGED  
CONSTRUCTION**



**NOTE:**

• 800 Series C-Clamp meets federal spec # GGG-C-406a, Type I, Class A, Grade a, Style 1

## FEATURES

**SQUARE THROAT DESIGN (4400 SERIES):**

- Up to 37% More Throat Depth Than Standard Deep Throat C Clamps

**PERMA-PADS®:**

- Exclusive Black Oxide Coated Pad Swivels and Adapts to Angular Work Pieces For Tighter Holding

**REPLACEABLE PARTS:**

- Both the Spindle and PERMA-PADS® are Replaceable and Can Be Individually Ordered

**DROP FORGED:**

- Manufactured For Greater Strength Under Regular Strength Applications

Stock No.	Model	Nominal Opening Capacity (In.)	Throat Depth (In.)	Clamp Pressure (Lbs.)	Spindle Size(In.)
<b>4400 SERIES SQUARE THROAT</b>					
14350	4404	0 – 4	4	4100	3/4
14375	4406	0 – 6	5	5400	3/4
14400	4408	2 – 8	6	5900	3/4
<b>800 SERIES STANDARD DEPTH</b>					
14714	802	0-2	1-13/16	2,700	9/16
14728	803	0-3	1-15/16	3,000	9/16
14742	804	0-4	2-5/16	3,700	5/8
14756	806	0-6	2-15/16	4,500	5/8
14770	808	0-8	3-7/16	5,200	3/4
14784	810	1-1/2-10	3-3/4	6,000	3/4
14798	812	1-1/8-12	3-7/8	8,000	3/4

## IDEAL FOR

- Steel Fabrication
- Industrial Maintenance
- Production
- Repair Operations



# 540A SERIES CARRIAGE C-CLAMPS

INDUSTRY'S CLASSIC DESIGN



540 SERIES



OSCILLATING HEAD



SLIDING CROSS  
PIN HANDLE



DUCTILE IRON FRAMES



## FEATURES

### DUCTILE IRON FRAMES:

- Rugged Frames Designed for Maximum Clamping Pressure

### CLASSIC DESIGN:

- Most Popular C-Clamp for Over 50 Years

### BLACK OXIDE COATING:

- Spindles and Pads are Treated to Resist Corrosion

### OSCILLATING HEAD:

- High Quality Steel Pad is Built to Last and Provide Firm Gripping Action on Angular Surfaces

Stock No.	Model	Nominal Opening Capacity (In.)	Throat Depth (In.)	Clamp Pressure (Lbs.)	Spindle Size(In.)
<b>540 SERIES CARRIAGE</b>					
22001	540A-2-1/2	0 - 2-1/2	1-3/4	1110	1/2
22002	540A-3	0 - 3	1-7/8	1800	1/2
22003	540A-4	0 - 4	2-1/16	2150	5/8
22004	540A-5	0 - 5	2-1/2	2250	5/8
22005	540A-6	0 - 6	2-3/4	2450	5/8
22006	540A-8	0 - 8	3-1/4	2750	3/4
22007	540A-10	0 - 10	3-5/8	2850	7/8
22008	540A-12	0 - 12	3-5/8	2850	7/8
22009	540A-14	0 - 14	3-3/4	2850	7/8

## IDEAL FOR

- Light Industrial
- Home Craftsman
- Woodworking
- Repair



# 140 & 250 SERIES CARRIAGE C-CLAMPS

LIGHT INDUSTRIAL

140 SERIES



DEEP REACH



DUCTILE IRON FRAMES



EXTRA DEEP REACH  
DESIGN



BLACK OXIDE COATING

XTRA DEEP  
REACH



## FEATURES

### DEEP REACH PATTERN:

- Provided Maximum Depth for Applications Requiring Increased Throat Capacity

### DUCTILE IRON FRAMES::

- Rugged Frames Designed for Maximum Clamping Pressure

## IDEAL FOR

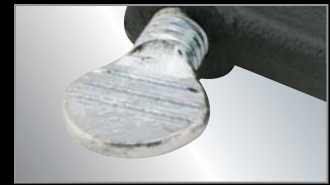
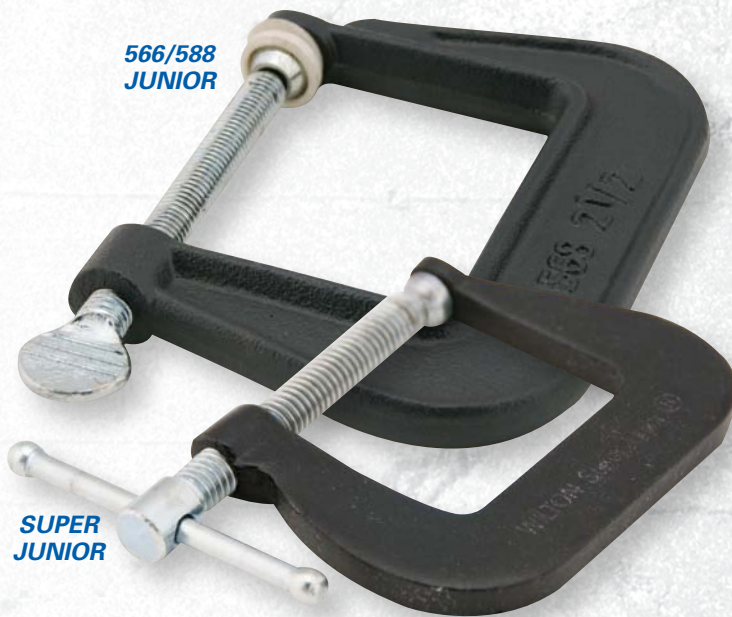
- Light Industrial
- Home Craftsman
- Woodworking
- Repair

Stock No.	Model	Nominal Opening Capacity (In.)	Throat Depth (In.)	Clamp Pressure (Lbs.)	Spindle Size(In.)
<b>DEEP REACH CARRIAGE</b>					
42510	251	0 - 1	3	350	1/4
42520	252	0 - 2	3-1/2	450	5/16
42525	252-1/2	0 - 2-1/2	4	600	3/8
42530	253	0 - 3	4-1/2	700	7/16
<b>XTRA DEEP REACH CARRIAGE</b>					
42450	245	2-1/2	4-3/4	1,600	7/16
42460	246	2-1/2	6-1/4	1,600	7/16
<b>140 SERIES CARRIAGE</b>					
41411	141C	0 - 1	1-1/16	645	1/4
41416	141-1/2C	0 - 1-1/2	1-1/2	820	5/16
41421	142C	0 - 2	1-1/8	800	5/16
41423	1422C	0 - 2-1/2	1-7/16	850	3/8
41426	142-1/2C	0 - 2-1/2	2-1/2	1005	3/8
41405	143C	0 - 3	2	1430	7/16
41406	144C	0 - 4	2-3/4	1535	1/2
41407	145C	0 - 5	3	1225	5/8
41408	146C	0 - 6	3-1/4	1400	5/8
41409	148C	0 - 8	4	1700	3/4



# JUNIOR® & SUPER JUNIOR® C-CLAMPS

**SUPER SMALL. SUPER TOUGH**



**ZINC PLATED SCREW**



**FORGED STEEL FRAMES**



**NYLON CAPS/FOOT INSERTS**



## FEATURES

### ZINC PLATED SCREW:

- Steel Spindles are Treated to Resist Corrosion Extending Life

### FORGED STEEL FRAMES:

- Heat Treated to Provide a Strong Weight to Strength Ratio

### NYLON CAPS / FOOT INSERTS (566/588 JUNIOR):

- Optional Feature to Protect the Work Surface From Marring

### OSCILLATING HEAD:

- Firm Gripping Action on Angular Surfaces

Stock No.	Model	Nominal Opening Capacity (In.)	Throat Depth (In.)	Clamp Pressure (Lbs.)	Spindle Size(In.)
<b>SUPER JUNIOR®</b>					
21301	50	0 – 1	1	500	–
21302	51	0 – 1	1-1/2	500	–
21303	52	0 – 1-1/4	1-1/4	800	–
21304	53	0 – 1-1/2	1-1/2	850	–
21305	54	0 – 2	1-1/4	875	–
21306	55	0 – 3	1-3/8	1100	–
21307	56	0 – 2-1/2	2-1/2	850	–
<b>566/588 JUNIOR®</b>					
22105	H566	0 – 1-1/4	1-1/4	450	1/4
22115	H566N	0 – 1-1/4	1-3/16	550	1/4
22116	H568N	0 – 2-1/2	2-5/16	550	3/4

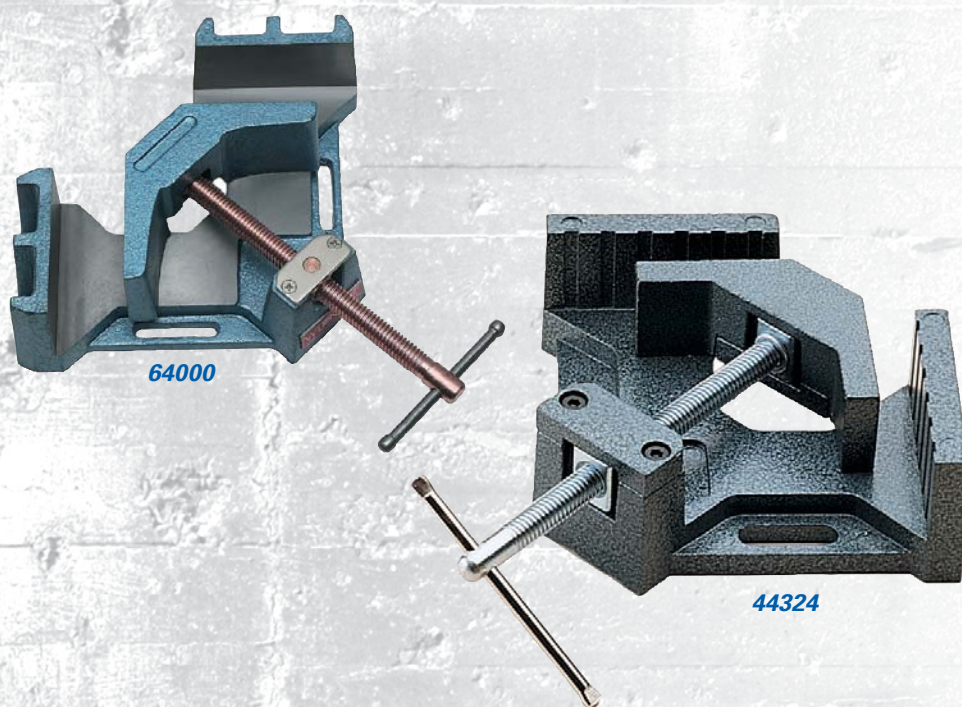
## IDEAL FOR

- Light-Duty Clamping
- Pattern and Mold Making
- Aircraft/Aerospace Industry

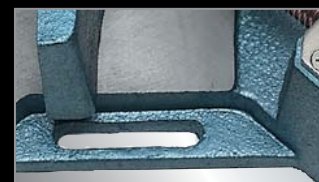


# HEAVY-DUTY STEEL ANGLE CLAMPS

90° CLAMPING



SELF CENTERING JAW



VERSATILE MOUNTING  
SLOTS



COPPER PLATED SPINDLE  
(64000 & 64002 ONLY)

## FEATURES

### CAST IRON FRAME:

- The 90° angle clamp is made of high-quality cast iron

### VERSATILE MOUNTING SLOTS:

- Slotted holes are provided in the base for convenient workbench mounting

### PRECISION:

- Work surfaces (including base) are milled for added precision

## IDEAL FOR

- Welding
- Woodworking
- Light Industrial

Stock No.	Model	Capacity Miter (in.)	Jaw Height (in.)	Jaw Length (in.)
<b>HEAVY-DUTY STEEL ANGLE CLAMPS</b>				
44324	AC-324	2-3/4	1-3/8	2-1/4
64000	AC-325	3-11/32	1-3/8	4-1/8
64002	AC-326	4-3/8	2-3/8	4-1/8



# SPECIALTY CLAMPS



## STEEL PIPE CLAMP

- Ideal for any applications where extra deep-reach is required
- Moveable and stationary parts are made of heavy-duty, ductile cast iron for added strength
- Multiple disc clutch provides sliding jaws with instant adjustment, secure hold and quick release
- 2-Piece design universal fit for any 3/4" pipe



## THE GRIPPER

- Non-conductive and static free
- Fiberglass reinforced nylon design
- Light 0.1 lb weight still exerts a high clamping force of 80 PSI



## REGULAR-DUTY I BAR CLAMPS

- A rapid acting powerful clamp designed and constructed for hard, everyday production work
- Patented, quick action, no slip clutches are 3/4" apart and formed in the web for greater bar strength
- High strength ductile slide cannot slip or bind, easily released
- Steel handle, with comfortable wood crank handle for fast clamping
- Bar dimension is 7/16" x 1-1/2" x 5/32", screw diameter is 5/8"

Stock No.	Description	Pipe Size (In.)	Clamp Face (In.)
<b>PIPE CLAMP</b>			
14870	#530 3/4" EXTRA DEEP PIPE CLAMP	3/4	2 x 1-3/4

Stock No.	Clamp Pressure (PSI)	Grounding Hole Diameter (In.)
<b>THE GRIPPER</b>		
40105	80	1/4

Stock No.	Bar Length (Ft.)	Throat Depth (In.)	Clamp Face (In.)	Clamp Pressure (lbs.)
<b>I BAR CLAMPS</b>				
21801	2	1-13/16	1-7/8	6,000
21802	2-1/2	1-13/16	1-7/8	6,000
21803	3	1-13/16	1-7/8	6,000
21804	4	1-13/16	1-7/8	6,000
21805	5	1-13/16	1-7/8	6,000
21806	6	1-13/16	1-7/8	6,000







# WILTON B.A.S.H.<sup>TM</sup>

**THE WORLD'S MOST DURABLE SLEDGE HAMMER**



**WILTON B.A.S.H.  
SLEDGE HAMMERS**





At Wilton®, we are on a never-ending journey to create the highest quality, most indestructible tools on the market. On this journey we've managed to design patents for the world's most durable hammers with Unbreakable™ Technology, revolutionary design, and engineered no-slip rubber grip.



**WILTON B.A.S.H.**  
**BALL & CROSS PEIN**





# THE WORLD'S MOST DURABLE SLEDGE HAMMER

## A: UNBREAKABLE™ TECHNOLOGY

Steel core design prevents breaking during overstrikes

## B: SAFETY PLATE

Locks head firmly to handle eliminating dislodging

## C: NO-SLIP GRIP

Textured handle for secure grip while striking

## D: HI-VIS GREEN HEAD

Adds instant identification under any job site conditions



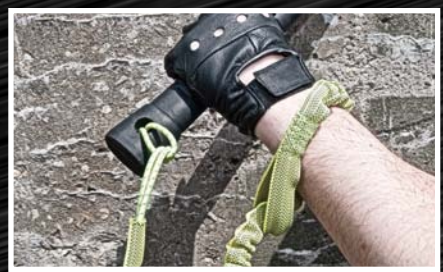
### FLAT HEAD

CONVENIENTLY DESIGNED TO STAND UPRIGHT FOR EASY REACH



### ANTI-VIBE NECK

ERGONOMICALLY DESIGNED TO PREVENT INJURY FROM REPEATED JOB SITE USE



### LANYARD HOLE

SAFELY SECURE SLEDGE HAMMER TO YOUR WRIST



# BAD ASS... & WE'LL PROVE IT

## 400% TOUGHER...

### STRIKE AFTER STRIKE THE RESULTS SPEAK FOR THEMSELVES

#### OVERSTRIKE TEST Number of mechanical overstrikes before handle breaks

NUMBER OF OVERSTRIKES



#### SLEDGE HAMMER TYPE



#### WE PUT OUR MONEY WHERE OUR MOUTH IS

The WILTON BASH™ Sledge Hammer with Unbreakable™ Handle Technology is quite simply the most durable hammer on the market, outperforming wood and fiberglass handled hammers strike after strike. We are so confident in the WILTON BASH™ Unbreakable™ Technology that for 2 full years after purchase, break the handle of a BASH™ Sledge Hammer under normal wear and tear and receive \$1,000.

FOR COMPLETE GUARANTEE DETAILS VISIT [YOUR LOCAL DEALER OR WILTONBASH.COM](http://WILTONBASH.COM).



Wilton Unbreakable™ Handled Sledgehammers meet ANSI Specifications: "Hand Tools - Heavy Striking Tools Safety Requirements"



# B.A.S.H.<sup>TM</sup> SLEDGE HAMMERS

THE WORLD'S MOST DURABLE SLEDGE HAMMER



10 LBS.  
16" HANDLE

8 LBS.  
16" HANDLE

## DURABILITY & SAFETY FEATURES

### UNBREAKABLE<sup>TM</sup> TECHNOLOGY:

- Steel core eliminates breaking during overstrikes

### HIGH VIS HEAD:

- Patented drop forged 46 HRC head endures the most demanding applications

### SAFETY PLATE:

- Secures head to handle preventing head from dislodging

### ANTI-VIBE NECK:

- Thick, tapered neck absorbs vibration reducing worker fatigue

### NO-SLIP GRIP:

- Vulcanized rubber handle for secure grip while striking

### LANYARD HOLE:

- Safely secure hammer to wrist or stationary object

## IDEAL FOR

- Demolition Work
- Fracturing Stone and Concrete
- Driving Fence Posts
- Police, Fire, and Rescue
- Driving Stakes
- Rebar Work
- Railroads





**UNBREAKABLE™  
TECHNOLOGY**



**SAFETY PLATE**



**GUARANTEED  
UNBREAKABLE™**



**8 LBS.  
24" HANDLE**

**2.5 LBS.  
12" HANDLE**

**SCAN THE CODE WITH YOUR  
SMART PHONE TO SEE THE  
WILTON B.A.S.H IN ACTION  
AND FOR GUARANTEE DETAILS**



**WILTONBASH.COM**

Stock No.	Head Size	Handle Size
<b>BASH™ SLEDGE HAMMERS (46 HRC)</b>		
20212	2-1/2 lbs.	12"
20412	4 lbs.	12"
20416	4 lbs.	16"
20424	4 lbs.	24"
20616	6 Lbs.	16"
20624	6 lbs.	24"
20630	6 lbs.	30"
20636	6 lbs.	36"
20816	8 Lbs.	16"
20824	8 lbs.	24"
20830	8 lbs.	30"
20836	8 lbs.	36"

Stock No.	Head Size	Handle Size
<b>BASH™ SLEDGE HAMMERS (46 HRC)</b>		
21016	10 Lbs.	16"
21024	10 lbs.	24"
21030	10 lbs.	30"
21036	10 lbs.	36"
21224	12 lbs.	24"
21230	12 lbs.	30"
21236	12 lbs.	36"
21430	14 lbs.	30"
21436	14 lbs.	36"
22036	20 lbs.	36"

Stock No.	Head Size	Handle Size
<b>BASH™ SOFT FACE SLEDGE HAMMERS (30 HRC)</b>		
40212	2.5 lbs.	12"
40412	4 lbs.	12"
40416	4 lbs.	16"
40624	6 lbs.	24"
40636	6 lbs.	36"
40824	8 lbs.	24"
40836	8 lbs.	36"
41036	10 lbs.	36"
41236	12 lbs.	36"
41436	14 lbs.	36"



# B.A.S.H.<sup>TM</sup> BALL PEIN & CROSS PEIN HAMMERS

THE WORLD'S MOST DURABLE BALL & CROSS PEIN HAMMERS



BALL PEIN

## DURABILITY & SAFETY FEATURES

### UNBREAKABLE<sup>TM</sup> TECHNOLOGY:

- Steel core eliminates breaking during overstrikes

### SAFETY PLATE:

- Secures head to handle preventing head from dislodging

### ERGONOMIC HANDLE:

- Shaped and thickened for increased comfort, less vibration, and improved grip

### HI-VIS DROP FORGED HEAD:

- Adds instant identification under any job site conditions

### LANYARD HOLE:

- Safely secure hammer to wrist or stationary object





**UNBREAKABLE™  
TECHNOLOGY**



**DROP FORGED HEAD**



**ERGONOMIC HANDLE**



**CROSS PEIN**

## IDEAL FOR

- Light Forging
- Bending
- Forming
- Peining

Stock No.	Head Size	Handle Size
<b>BASH™ BALL PEIN HAMMERS</b>		
32414	24 oz.	14"
33214	32 oz.	14"
34014	40 oz.	14"
<b>BASH™ CROSS PEIN HAMMERS</b>		
32414	24 oz.	14"
33214	32 oz.	14"





# DUCTILE IRON & ALUMINUM PIPE WRENCHES

**DROP-FORGED AND BUILT TO LAST**



**DROP FORGED JAWS**



**DUCTILE CAST IRON HANDLE**



**HEAVY-DUTY ADJUSTABLE RING**



**LIGHTWEIGHT ALUMINUM BODY**

## DUCTILE FEATURES

### JAW CONSTRUCTION

- Drop Forged Upper and Lower Jaws

### JAW TYPE:

- Floating Hook Jaw with Spring Suspension for Easier Gripping

### RING AND HANDLE:

- Heavy-Duty Adjustable Ring and Ductile Cast Iron Handle

### CAPACITY:

- 1.5" to 5"

Stock No.	Description	Pipe Capacity (in.)
<b>WILTON® DUCTILE IRON PIPE WRENCHES</b>		
38110	10" Ductile Pipe Wrench	1-1/2
38114	14" Ductile Pipe Wrench	2
38118	18" Ductile Pipe Wrench	2-1/2
38124	24" Ductile Pipe Wrench	3
38136	36" Ductile Pipe Wrench	5

## ALUMINUM FEATURES

### HANDLE CONSTRUCTION

- High Quality Cast Aluminum Body

### JAWS:

- Drop Forged Upper and Lower Jaws

### ADJUSTING RING

- Heavy-Duty Adjustable Ring

### CAPACITY:

- 1.5" to 5"

Stock No.	Description	Pipe Capacity (in.)
<b>WILTON® ALUMINUM PIPE WRENCHES</b>		
38210	10" Aluminum Pipe Wrench	1-1/2
38214	14" Aluminum Pipe Wrench	2
38218	18" Aluminum Pipe Wrench	2-1/2
38224	24" Aluminum Pipe Wrench	3
38236	36" Aluminum Pipe Wrench	5





# WILTON® LIFETIME WARRANTY

We are confident of every Wilton® tool we manufacture. To prove it, we back every product that bears the Wilton® name with a Lifetime Warranty. This includes everything from Vises to Clamps, Pipe Wrenches to BASH™ Hammers. We hope you are as proud and confident of our equipment as we are.

The Wilton® lifetime warranty is for the product's lifetime with no end date. This warranty covers manufacturer's defect only and does not cover misuse, abuse, accidents, negligence, wear and tear, improper repair or alterations, etc. For more information please visit [wiltontools.com](http://wiltontools.com).







**HOLDING STRONG SINCE 1941**

**WILTONTOOLS.COM**

